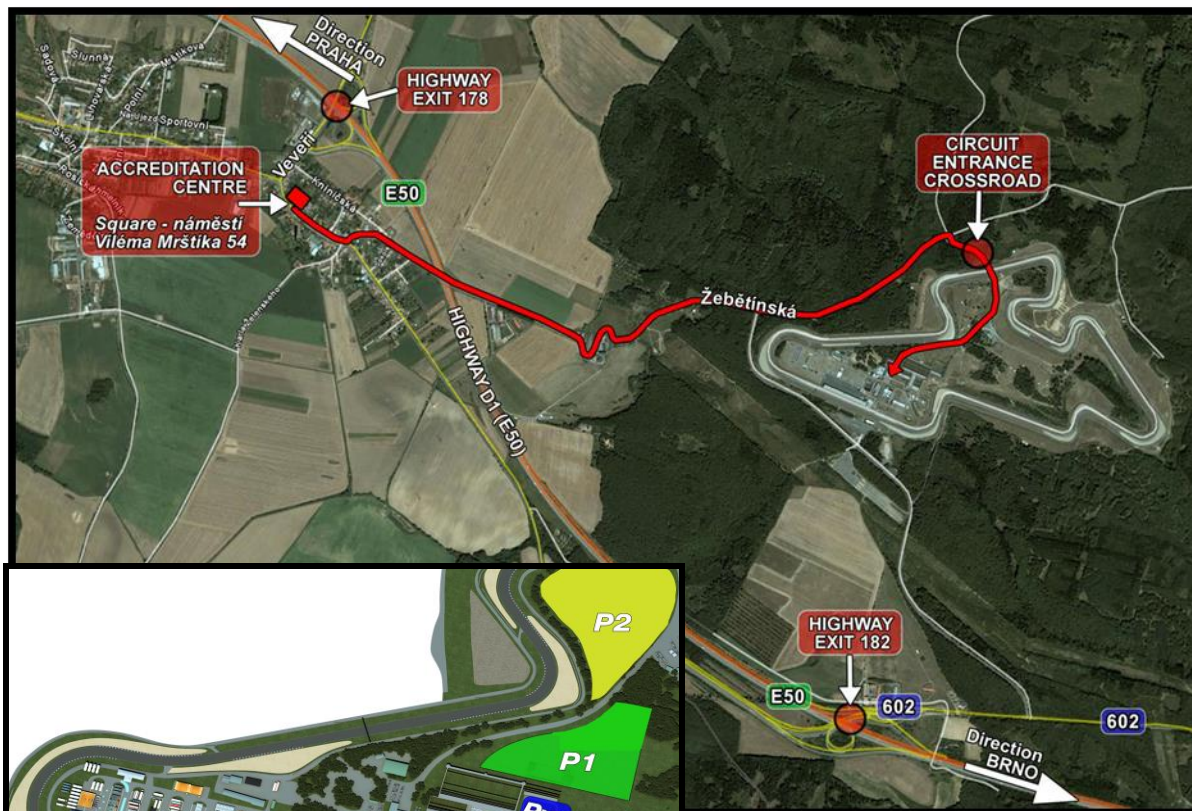


ACCREDITATION CENTRE



CIRCUIT LOCATION

Brno Circuit is located approx. 23 km from the Brno City Centre and 30 km from the Brno Airport, 200 km from the Praha Airport and 170 km from the Vienna Airport.
 GPS Circuit Entrance: 49°12'16.42"N, 16°26'49.62"E

HOW TO ARRIVE TO THE CIRCUIT

- Coming from the Highway D1 (E50), both from Brno and Praha take the Exit 182, enter the national road 602 towards Popovky.
- After approx. 0.9 km turn left following signs "Grand Prix" and "Paddock".
- After approx. 4.5 km you will arrive to the Paddock.

ACCREDITATION CENTRE LOCATION

City Hall of Ostrovacice
 Square - náměstí Viléma Mrštíka 54
 GPS Accreditation Centre: 49°12'40.13"N, 16°24'30.23"E

HOW TO ARRIVE TO THE ACCREDITATION CENTRE

- Coming from the Highway D1 (E50), both from Brno and Praha, take the Exit 182 and follow towards Ostrovacice (Road 23 and then road 602). After approx. 4 km you find the City Hall on your right hand side, where is located the AC.
- From Brno you may also take the Exit 178 and follow towards Ostrovacice. After approx. 0.5 km you find the City Hall on your left hand side, where is located the AC.

HOW TO ARRIVE FROM THE ACCREDITATION CENTRE TO CIRCUIT (4.6 km)

- 0.0 km: Leave the Accreditation Centre towards "Zebetín".
- 0.3 km: Turn left and enter "Zebetínská" street and follow straight.
- 3.6 km: Turn right and enter the Circuit Area.
- 4.6 km: Paddock Entrance.

RACE SCHEDULE ON SUNDAY

Moto3™ Race:	11:00 h	local time
Moto2™ Race:	12:20 h	local time
MotoGP™ Race:	14:00 h	local time

ACCREDITATION CENTRE OPENING HOURS

Thursday, 3 August:	09:00 - 17:00 h
Friday, 4 August:	08:30 - 17:00 h
Saturday, 5 August:	08:30 - 18:00 h
Sunday, 6 August:	07:45 - 13:00 h

