

ADAC



WRC
FIA WORLD RALLY
CHAMPIONSHIP

wrc.com

TRIER - EIFEL - MOSEL - BAUMHOLDER - SAARLAND

RALLY GUIDE 1

20.-23. AUGUST 2015

www.adac.de/rallye-deutschland
f [adac.rallye.deutschland](https://www.facebook.com/adac.rallye.deutschland)



ADAC RALLYE DEUTSCHLAND



wrc.com



RALLY GUIDE 1 - TABLE OF CONTENTS

1. **Introduction – Welcome**
 2. **Contact Details**
 - 2.1 Permanent contact details
 - 2.2 Rally Headquarters Trier
 - 2.3 Media contact details
 3. **Programme and Critical Deadlines**
 - 3.1 Programme before the rally week
 - 3.2 Programme during the rally week
 4. **Entry Details**
 - 4.1 Titles for which the rally counts
 - 4.2 List of entry fees
 - 4.3 Entry packages
 - 4.4 Additional materials
 - 4.5 Payment of entry fees
 - 4.6 Advertising
 5. **Service Park**
 - 5.1 General information about the service park
 - 5.2 Facilities at service park
 - 5.3 Areas in the service park
 - 5.4 Environmental prescriptions
 - 5.5 Cash deposit
 - 5.6 Service park details
 - 5.7 Remote tyre fitting zones
 - 5.8 Recovery of retired cars
 6. **Two-Way Radio**
 - 6.1 Application procedure
 - 6.2 Contact details
 - 6.3 Application form
 7. **Fuel and Tyres**
 - 7.1 Fuel / General Conditions
 - 7.2 How to order FIA fuel
 - 7.3 Refuel zones (RZ)
 - 7.4 Tyres
 8. **Import of Vehicles and Spare Parts**
 - 8.1 National laws / custom clearance
 9. **Helicopter Use**
 - 9.1 Registration procedure
 - 9.2 Application form for registration
 - 9.3 Contact details for national helicopter services
 10. **Hospitality Arrangements**
 11. **Hotel Accommodation / Reservation**
 12. **Reconnaissance**
 - 12.1 Registration
 - 12.2 Registration procedure
 - 12.3 Summary of specific regulations and instructions for recce
 - 12.4 Installation of speed control checking devices
 - 12.5 Other points
 13. **Scrutineering, sealing and marking**
 - 13.1 Date, place and time window
 - 13.2 Preparations to be made before the car is brought to scrutineering
 - 13.3 Collection / return points for safety tracking systems
 - 13.4 Final scrutineering
 14. **Shakedown Konz**
 - 14.1 General information
 - 14.2 Instructions, registration and information
 15. **Start Procedure**
 - 15.1 Ceremonial start procedure and order
 - 15.2 Start of the Rally
 16. **Finish Procedure**
 17. **PR Activities**
 18. **Media**
 - 18.1 Contact details before the event
 - 18.2 Accreditation procedure, criteria and deadline
 - 18.3 Form for reservation of facilities
 19. **Medical and Safety Service**
 - 19.1 Event emergency number
 - 19.2 Medical and safety services
 - 19.3 Location of principal hospitals
 20. **List of Useful Facts and Services**
 - 20.1 Regroupings Bilstein Mandern and Föhren
 - 20.2 Route note cars
 - 20.3 Additional services at special stages
 - 20.4 Climate
 - 20.5 Time zone
 - 20.6 Currency
 - 20.7 Power supply
 - 20.8 Driving in Germany
 - 20.9 List of useful services - General
 - 20.10 Car dealers
 - 20.11 Hire car companies
 - 20.12 Bus rental
 - 20.13 Airports (with distances to Trier)
 - 20.14 Copy services (Trier Area)
 - 20.15 Carstickers
 - 20.16 Maps
 - 20.17 Mobile phones
 - 20.18 Security companies
 - 20.19 Taxis
 - 20.20 Other important phone numbers
- APPENDIX 1 Itinerary**
- 1.1 **Friday, Saturday, Sunday (V2)**
 - 1.2 **Itinerary compared with 2014 (V1)**
 - 1.3 **Recce schedule (V1)**
- APPENDIX 2 Overview maps for each day**
- APPENDIX 3 Service park draft layout (V2)**
- APPENDIX 4 City map (Trier)**

1. INTRODUCTION – WELCOME

Dear participants and team members, dear guests,

It is our great pleasure to welcome you to the 33rd edition of our ADAC Rallye Deutschland which will this year take place as a qualifying round of the FIA World Rally Championship for the 13th time.

The ADAC Rallye Deutschland is also glad to host the support championships FIA WRC2, FIA WRC3 and the new FIA RGT Cup.

Again will Trier, Germany's oldest town, be the center of our event. The teams and drivers will be presented to the public on Thursday evening in front of the fantastic Porta Nigra before the competitive element with three days of rallying starts on Friday morning.

On Friday the rally route goes to the north where the well-known special stages "Sauertal" and "Waxweiler" take place before it comes to the traditional vineyard stages along the Mosel river.

Saturday's itinerary presents special stages which characteristics could hardly be more different and which represents the special attraction of the ADAC Rallye Deutschland: it starts with the super special "Grafschaft", one of the twisty vineyard stages, than it goes to the Northern Saarland area with one of the faster stages "Bosenberg". On the military camp of Baumholder the shortest stage "Arena Panzerplatte" and the longest stage "Panzerplatte Long" of the rally take place. A special highlight of the event will be the triple running of SS "Arena Panzerplatte": after the first run the drivers come back and arrange for a second lap. So the spectators can get excited about fantastic rallye-action.

On Sunday the rally ends with the stages "Stein und Wein" and "Dhrontal" along the Mosel river, the last one will be the PowerStage.

To ensure a high level on safety for spectators, competitors and officials, the safety arrangements have been developed. However the understanding of everybody involved and in particular of the spectators is urgently required. We trust in their appreciation that any positions not in line with the published and delimited spectator areas will not be tolerated and that we all depend on their co-operation to run a safe event.

The information contained in this Rally Guide is designed to provide you some useful information in the preparation of your visit to our event. Should you require any further information, please do not hesitate to contact our staff in the permanent Rally Secretariat.

We wish you all a very successful, safe and enjoyable ADAC Rallye Deutschland 2015 and are looking forward to welcome you in August in Trier!

Alfred Rommelfanger
Clerk of the Course

Please note that this document has **NO REGULATORY POWER**. It is for information only. For binding regulations refer to the 2015 FIA WRC Sporting Regulations and the Supplementary Event Regulations of the ADAC Rallye Deutschland 2015.

2. CONTACT DETAILS

2.1 PERMANENT CONTACT DETAILS

Permanent Rally Office in Koblenz:

ADAC Rallyebüro, Viktoriastraße 15, D-56068 Koblenz, Fax: +49 261 1303-299

Tanja GEILHAUSEN	tanja.geilhausen@rallye-deutschland.de	phone: +49 261 1303-335
Rainer FRIEDEMANN	rainer.friedemann@rallye-deutschland.de	phone: +49 261 1303-340
Berthold HANTEL	berthold.hantel@rallye-deutschland.de	phone: +49 261 1303-330
Timo LEWERENZ	timo.lewerenz@rallye-deutschland.de	phone: +49 261 1303-325

Munich:

ADAC Beteiligungs- und Wirtschaftsdienst GmbH, Andreas BACHMEIER
Hansastr. 19, D-80686 München E-mail: andreas.bachmeier@adac.de
Phone: +49 89 76764421 Fax: +49 89 76764430

Internet official website: www.adac.de/rallye-deutschland

Key officials of the event:

@ denotes that the person has an e-mail address complying with firstname.lastname@rallye-deutschland.de (to observe: German "Ü" = "UE", "Ö" = OE for this purpose)

Clerk of the Course:	Alfred ROMMELFANGER	@
Deputy Clerks of the Course:	Stefan BAYER	
	Franz-Rudolf UBACH	ubach@rallye-deutschland.de
Assistant Clerks of the Course:	Friedhelm KISSEL (Field)	
	Katja ROMMELFANGER (Rally Control)	
	Simone SCHLEIMER (Rally Control)	
Chief Safety Officer:	Kai HANTEL	@
Deputy Chief Safety Officers:	Berthold HANTEL	@
	Volker PAUL	
	Armin BECKER	
Secretary of the Rally:	Tanja GEILHAUSEN	@
Permanent Rally Secretariat:	Rainer FRIEDEMANN	@
	Berthold HANTEL	@
	Timo LEWERENZ	@
Spectator Management:	Franz-Rudolf UBACH	ubach@rallye-deutschland.de
Regional Organisers:	Thomas WINKLER (service park)	@
	Manfred KRONENBURG (Trier)	@
	Eric DEUBEL (Saarland)	@
	Werner REHLES (Hunsrück)	@
	Helmut WEYER (Mosel)	@
Chief National Scrutineer:	Rudolf BOLLIG	@
Competitors Relations Officers:	Jacky JUNG	jacky.jung@free.fr
	Josef KASPAR	Josef_Kaspar@t-online.de
	Karl-Friedrich BECK	kfbeck@bmp-steuer.de
	Katharina BRÜGGMANN	katharina.brueggmann@gmx.de
Chief Media Officer:	Peter LINKE	media@rallye-deutschland.de
Police Liaison, Guests:	Norbert PUTH	@
Environmental Officers:	Tilman KLUGE, Christoph SCHACKMANN, Dr. Rüdiger BÖNGELER	
Chief Timing Marshal:	Peter ROTHER	
Results Co-ordinator:	Winfried WEBER	@

2.2 RALLY HEADQUARTERS TRIER (FROM MONDAY, 17 AUGUST TO SUNDAY, 23 AUGUST):

Park Plaza Hotel, Nikolaus-Koch-Platz 1, D – 54290 Trier
Phone: +49 261 1303-335, Fax: +49 261 1303-299

Rally Office Opening Hours:

Monday	17 August 2015	14:00 – 20:00
Tuesday	18 August 2015	08:00 – 22:00
Wednesday	19 August 2015	08:00 – 21:00
Thursday	20 August 2015	08:00 – 22:00
Friday	21 August 2015	07:30 – 23:00
Saturday	22 August 2015	06:00 – 24:00
Sunday	23 August 2015	06:00 – 19:00

2.3 MEDIA CONTACT DETAILS:

ADAC Rallye Deutschland – media contact
c/o die agentour GmbH
Rückertstrasse 4
Tel.: +49 89 530997-0
E-Mail: media@adac-rallye-deutschland.de

Peter Linke
D-80336 München
Fax.: +49 89 530997-99
Internet: www.adac.de/motorsport

MEDIA CENTER DURING THE RALLY

Messepark Trier – In den Moselauen 1 – D-54294 Trier.

Opening hours media accreditation and media centre: TBA

FIA post rally press conference: TBA

3. PROGRAMME AND CRITICAL DEADLINES

3.1 PROGRAMME BEFORE THE RALLY WEEK

Monday, 1 June 2015	
Closing date for submission of radio licence applications (late applications may be refused!) to Bundesnetzagentur Mainz	ShortTerm@BNetzA.de
Monday, 17 June 2015	
Supplementary Regulations published (at latest)	www.adac.de/rallye-deutschland
Monday, 20 July 2015	
Closing date for entries	Rally Office
Closing date for order of extra facilities and space in service park	Rally Office
Closing date for order of extra material	Rally Office
Road-Books, rally maps available and publication of Rally Guide 2	Rally Office
Thursday, 29 July 2015	
Closing date for requests for consecutive service areas	Rally Office
Closing date for helicopter licence applications	Rally Office
Closing date for all competitors wishing to use FIA fuel to notify their fuel requirements	wrcfuelorder@vitalequipment.co.uk

3.2 PROGRAMME DURING THE RALLY WEEK

Note: A National Rally with the about 20 cars of the ADAC Opel Rallye Cup will follow the field of the WRC rally. This rally will cover the same itinerary as the WRC rally (both Sections on each day) except SS 17 – Bosenberg 2. Additional competitions or demonstration runs over the complete itinerary are not scheduled.

Monday, 17 August 2015		
14:00-20:00hrs	Registration for reconnaissance Administrative checks and collection of materials	Rally HQ Rally HQ
18:00-20:00hrs	Availability of recce GPS recorders for reconnaissance (all FIA priority drivers)	Rally HQ
20:00hrs	Closing date for shakedown registration (P1/P2 drivers not entered by a Manufacturer/WRC Team and non-priority drivers)	Rally HQ
From Monday, 17 August 2015, 14:00 and during Rally HQ opening times		
	Collection of material and documents. FIA WRC registered Manufacturers and WRC Teams may send a representative (duly assigned in writing) for the collection of material.	Rally HQ
Tuesday, 18 August 2015		
08:00-22:00hrs	Administrative checks and collection of material	Rally HQ
08:00-21:00hrs	Reconnaissance of special stages	Recce Schedule
12:00hrs	Registration for Route Note Cars closes (drivers entered with a World Rally car)	Rally HQ
14:00-22:00hrs	Availability of safety tracking systems at the SIT Sports Truck in the service park Trier (the tracking systems for Priority 1 will be delivered to the service park team area)	SIT truck (SP)
Wednesday, 19 August 2015		
08:00-12:00hrs	Administrative checks and collection of material	Rally HQ
08:00-17:00hrs	Reconnaissance of special stages	Recce Schedule
14:45-19:15hrs	Reconnaissance of Shakedown	Recce Schedule
TBA	Sealing of parts and delivery of Scrutineering Certificate for Manufacturers' and WRC Teams' cars	SP teams' area
From 15:00hrs	Scrutineering including component sealing for cars of P1/P2 drivers (except Manufacturers' and WRC Teams' cars), of P3 drivers and of non-priority drivers.	Trier Public Services Bus Terminal
16:00hrs	Briefing with the team managers (WRC registered manufacturers and WRC teams), stewards' meeting room	Rally HQ
18:00-20:00hrs	Return of GPS recorders	SP HQ
Thursday, 20 August 2015		
From 08:00hrs	Scrutineering continues (if necessary)	Trier Bus Terminal
09:30-11:00hrs	Shakedown for P1 and P2 drivers	Shakedown
11:00-13:00hrs	Shakedown for P1, P2 and P3 drivers	Shakedown
13:30-15:30hrs	Shakedown for non-priority drivers	Shakedown
10:00hrs	Latest time to return recce pass	Rally HQ/SP HQ
13:10hrs	Meet the Crews	Service park
13:40hrs	FIA pre-event press conference	Media Centre
16:00hrs	Meeting with WRC route note car crews (location: TBA to those concerned)	Trier
17:00hrs	Publication ceremonial start times and of start list for Section 1	Rally HQ
18:00hrs	Helicopter pilots' briefing, location: TBA	TBA
19:30-20:00hrs	Autograph session for P1 drivers, Trier (with rally cars)	Hauptmarkt
From 20:50hrs	Ceremonial start	Porta Nigra Trier
Friday, 21 August 2015		
08:00hrs	Start Section 1 (1 st car), service park Trier	SP
22:00hrs	Publication of start list for Saturday	Rally HQ
23:15hrs	Finish of Friday and last car in Parc Fermé Trier	TR Messepark

Saturday, 22 August 2015		
02:10hrs	Latest time for all cars that will re-start to return to the Rally 2 Parc fermé	PF Messepark
06:10hrs	Re-Start Saturday (1 st car), Parc Fermé Messepark	PF Messepark
23:15hrs	Publication of start list for Sunday	Rally HQ
Sunday, 23 August 2015		
00:30hrs	Finish of Saturday and last car in Parc Fermé Messepark	PF Messepark
02:10hrs	Latest time for all cars that will re-start to return to the Rally 2 Parc Fermé	PF Messepark
06:10hrs	Re-Start Sunday (1 st car), Parc Fermé Messepark	PF Messepark
13:21hrs	Finish of Sunday (1 st car), Parc Fermé Trier IN	PF Messepark
From 15:00hrs	Podium ceremony for all cars	Porta Nigra TR
TBA	FIA post-event press conference	Media Centre
After podium	Final scrutineering, location: Autohaus Mercedes Hess Trier (Karl-Marx-Str. 62)	Mercedes Hess
17:00hrs	Publication of provisional final classification	Rally HQ
From 19:00hrs	Closing party for team members and organisation (upon invitation)	Trier (TBA)

All the application forms can be completed electronically!

4. ENTRY DETAILS

4.1 TITLES FOR WHICH THE RALLY COUNTS

FIA World Rally Championship for Drivers
 FIA World Rally Championship for Co-drivers
 FIA World Rally Championship for Manufacturers
 FIA WRC 2 Championship for Teams
 FIA WRC 2 Championship for Drivers
 FIA WRC 2 Championship for Co-Drivers
 FIA WRC 2 Production Car Cup for Drivers
 FIA WRC 2 Production Car Cup for Co-Drivers
 FIA WRC 3 Championship for Teams
 FIA WRC 3 Championship for Drivers
 FIA WRC 3 Championship for Co-Drivers
 FIA RGT Cup for Drivers
 FIA RGT Cup for Co-Drivers

4.2 LIST OF ENTRY FEES

FIA registered Manufacturers, WRC Teams and Support Championship competitors:

According to Appendix VI of the 2015 FIA WRC Sporting Regulations (**all these fees are net amounts, legal VAT of currently 19% must be added**).

Other teams (all the fees mentioned below are net amounts, legal VAT of currently 19% must be added)

With the organiser's optional advertising:

Private German entries	€ 1.500 (+ 19%)
Private foreign entries	€ 2.500 (+ 19%)
Legal entries	€ 5.000 (+ 19%)

Without the organiser's optional advertising:

Private German entries	€ 3.000 (+ 19%)
Private foreign entries	€ 4.500 (+ 19%)
Legal entries	€ 7.000 (+ 19%)

- Private German entry: Crews entered by a member of the crew or by club competitor (no company or third person as competitor), competitor **and** 1st driver must hold a competitor's/driver's licence issued by the DMSB (Deutscher Motor Sport Bund).
- Private foreign entry: Crews entered by a member of the crew or by club competitor (no company or third person as competitor), competitor and/or 1st driver holding a competitor's/driver's licence issued by a Sporting Authority affiliated to the FIA other than the DMSB (Deutscher Motor Sport Bund).
- Legal entry: Crew entered by a person who is not member of the crew or entered by any other legal entity.

ENTRY FEE INVOICES

It is reminded that the entry form must be accompanied by the total entry fees or by an appropriate receipt. Invoices for entry fees will be automatically issued and sent out for each entry (competitor's name and address). **Competitors requiring an invoice before payment is made must inform the organiser in due time so that the competitor can comply with the payment conditions.**

→ IMPORTANT NOTE:

Entries paid by a foreign company with a tax ID number and with business seat in an EU country may be paid EXCLUSIVE OF VAT, provided that the INVOICE ADDRESS as well as the RESPECTIVE TAX ID NUMBER are indicated TOGETHER WITH THE ENTRY FORM.

Invoices/ receipts for additional materials/ facilities will only be issued upon request.

4.3 ENTRY PACKAGES

Manufacturers, WRC Teams and Support Championship competitors: In compliance with Appendix VI of the 2015 FIA WRC Sporting Regulations.

Other teams:

	Private Competitors	Legal Competitors
Service park area	See point 5.3 below	
Car plates		
Guest plate	0	1
Service plate	1	2
Auxiliary plate	0	1
Passes		
Driver passes	2	2
Team passes	4	12
Team guest passes	0	4
Documents		
Road Book sets	1	2
Route maps	2	3
Programme	2	3
Result books	Website	

4.4 ADDITIONAL MATERIALS

For each additional set of service documents: (maximum of 2 sets in total for each crew; WRC registered Manufacturers, WRC Teams and Support Championship registered teams: see FIA WRC Regulations)

Each set "Auxiliary" 200 €
 Each additional set of Road-Books 400 €
 Each additional set of route maps 100 €
 Each additional set of route maps 10 €

All additional material should be ordered within the deadline as specified under point 3.
 All the amounts under 4.4 are inclusive of VAT.

4.5 PAYMENT OF ENTRY FEES

All entry fees must be paid by bank transfer to the following bank account:
 Bank name: Kreissparkasse Birkenfeld (Birkenfelder Landesbank),
 bank code: 562 500 30, account holder: FW GmbH, account no.: 261092,
 SWIFT CODE: BILADE55, IBAN: DE83 562 500 30 0000 261092.

See also Art. 4.2 "IMPORTANT NOTE"!

Cheques are not accepted. Any bank charges incurred must be paid by the competitors in addition to the entry fee. Please ensure that the competitor's name is included as reference on all bank transfers. **It is compulsory to mention the account holder "FW GmbH" on your bank transfer documents.**

4.6 ADVERTISING

No political, religious, social or abusive advertising. Advertising for private betting and gambling offers without permission for Germany is prohibited.

Publicity on tobacco is forbidden. This is a restriction self-imposed by the German tobacco industry.

5. SERVICE PARK

5.1 GENERAL INFORMATION ABOUT THE SERVICE PARK

GPS reference:

N: 49° 44' 31" O: 06° 37' 26"

There will be one service park during the 2015 ADAC Rallye Deutschland, located at Trier Messepark. The service park will be available for the teams as specified under point 5.6, or upon special agreement.

Please notice that all Temporary structures (e.g. tents, hospitalities) with a floor space of more than 75m² are subject to approval of the building control authority by the site of erection on presentation of the corresponding test book before setting up and usage. The result of this usage certification has to be recorded to the test book. Managing the test book electronically is forbidden (Landesbauordnung Rheinland-Pfalz (LBauO) - §76 Fliegende Bauten).

Several small tents placed/built together apply as a tent area and will also need a building permit if they have a floor space of more than 75m².

To make an appointment with the building control authority please contact:

Werner Marzi

Amt für Bauen, Umwelt, Denkmalpflege
Rathaus, Verw.Geb. VI, Am Augustinerhof
D-54290 Trier
Tel. +49 651 718-2636
Fax +49 651 718-1638
E-Mail:werner.marzi@trier.de
www.trier.de

Matthias Born

Dipl.-Ing. (FH)
Amt für Bauen, Umwelt, Denkmalpflege
Rathaus, Verw.Geb. VI, Am Augustinerhof
D-54290 Trier
Tel. +49 651 718-2630
Fax +49 651 718-1638
email: matthias.born@trier.de
www.trier.de

The teams may bring their service/auxiliary and recce car vehicles into the service park, as long as they can park them within their designated area. Otherwise these vehicles must be taken to the auxiliary parking adjacent to the service park. **Any parking of team vehicles outside their designated service area in the service park is strictly prohibited!** Any other car with a team-related car sticker (e.g. TFZ, manufacturer's meteo crew, route note car) may and must also be parked in the auxiliary parking. The entrance of Recce cars in the service parc without additional car sticker (service/auxiliary) after Thursday, 20th August 2015 is forbidden.

Competitors wishing to use a joint service area with another competitor must inform the organiser until the deadline at the latest as specified under point 3. The organiser can however not guarantee that all requests can be considered.

For the use until Thursday, 20st August 2015, a fuel tank calibration zone nearby the refuel area at the service park Trier will be provided. Any emptying or refilling of fuel in the area of the Messepark Trier may only be carried out in this zone and under the competitors' own responsibility.

Any dismantling of service area facilities before Sunday, 23 August 2015, 15:30hrs, must be made at times when there is no rally traffic inside the service park (see Itinerary) unless any such dismantling is exclusively carried out within the periphery of the corresponding team area itself (without using any kind of traffic lanes or team external areas).

5.2 FACILITIES AT SERVICE PARK

* General:

- Type of surface: partly gravel and partly paved.
- Available space: According to point 4.3
- Public toilets, water and waste collection points: See service park layout for locations
- Power: May be provided by the organiser, individual extension cables must be made available by the teams, sockets: German standard
- General lightning
- General night security from Monday, 17 August 2015, until Monday, 24 August 2015.
- Liquid gas: Liquid gas for kitchen service is available at:
Westfa, Flüssiggas und Umwelttechnik, Luxemburger Str. 38, 54294 Trier (phone +49 651 810010, fax +49 651 87571), or
MAXGAS GmbH, Luxemburger Str. 54, 54294 Trier (phone +49 651 1707170, fax: +49 651 1707171)
- A rally car wash facility will be available on Thursday (Shakedown), Friday, Saturday and Sunday each time prior to the cars entering the regroup area/service park Trier. See Road Books for exact locations.
- There is a car wash for trucks, available on workdays between 7:30 a.m. and 5:00 p.m. and on Saturdays between 7:30 a.m. and 12:00 a.m. at Ewerhardt Logistics, Auf Wolfsgang 8, 54311 Trierweiler

* Additional facilities in the designated areas for each Manufacturer or WRC Team, provided by the organiser free of charge:

- Available space: according to agreement
- Power supply: Only upon individual request
- Water: Fresh water and waste water drain available (collecting containers emptied once per day), hoses and connections/adapters to be supplied by each team
- Waste collection: 1 container – 1.1 m³ for each team (emptied once per day on Wednesday, Thursday, Friday, Saturday, Sunday)
- Container facilities for the cleaning of vehicle components nearby each Manufacturer/WRC Team area: **Please bring your own high-pressure cleaners.**
- Other services as per administrative package.

* Additional facilities subject to fee (see order form):

- Private chemical toilets (cleaned twice a day)
- Phone lines. The German Telekom informs that, to avoid technical problems, it is preferable to purchase routers, if required, on-site. **PLEASE NOTE THAT THESE ORDERS SHOULD BE RECEIVED UNTIL 26 JUNE 2015 TO GUARANTEE AVAILABILITY.**
- Extra additional removal / emptying of private kitchen waste, private toilets, waste water etc. upon individual request and payment.

Order form for additional facilities (to be submitted until the deadline as specified under point 3.): See organiser's website (FORMS).

5.3 AREAS IN THE SERVICE PARK

5.3.1 Manufacturer Teams & WRC Teams:

- a) Space strictly as the figures given in the Appendix VI of the 2015 FIA WRC Sporting Regulations.
- b) Additional car(s) as per Appendix VI: Depending on available space after allocation pursuant to a) above, on a first-come-first-serve basis.

5.3.2 Support Championships (WRC2 / WRC 3):

Space strictly in compliance with the 100 m² given in Appendix VI of the 2015 FIA WRC Sporting Regulations, general layout of each area: 10x10m.

5.3.3 FIA RGT Cup:

100 m² for each competitor, general layout of each area: 10x10m.

5.3.4 Other competitors:

10x10 m.

5.3.5 All competitors

Any competitor requiring more space and/or a different layout than indicated above must submit his/her request together with the entry form or until the entry closing date at the latest.

The organiser will try to satisfy the needs as much as possible and an additional fee of 40€ per m² will become due.

After this date requests will not be accepted.

5.4 ENVIRONMENTAL PRESCRIPTIONS

The compliance with the environmental and safety prescriptions (see also Supplementary Event Regulations) will be carefully checked by officials. Please make sure that all team members are aware of these prescriptions.

- The service park is located in a sensible water protection area. Both organiser and participants must undertake all efforts to protect the environment – in particular water and soil.
- **Cleaning of vehicle components**
Several facilities (water containers and water connection) will be available in the service park nearby the service park headquarters from Monday, 17 August 2015. **Please bring your own high-pressure cleaners, if required. The use of high-pressure cleaners or water hoses for cleaning purposes is prohibited at all other locations in the area of the service park.**
- The crews are obliged to put a sufficiently large plastic ground sheet under the competition car as long as service works are carried out on the car. The ground sheet must be sufficiently strong, have no damages and be tight, i.e. impervious to oil, fuel, cooling and brake liquids as well as to battery acid. **Any residues such as water, oil, fuel, any other liquids, dirt and similar must be collected from the ground sheets, the use of wet vacuum cleaners is recommended, and be disposed environmentally-friendly (e.g. into the containers at the high-pressure cleaners facilities provided by the organiser).**
- The crews are required to see that no substances hazardous to water pass over the edge of the ground sheet and into the ground, even in the case of rain.
- The service crews must be in possession of oil absorbing materials and have available a container for used oil and brake fluid at any time during the event.
- Due to official instructions, competitors must avoid any pollution of the environment. Any waste, wrapping material, spare parts, empty oil or colour tins, batteries, etc. must be collected and given to a waste disposal by the competitors themselves. Used oil must be collected and brought to the containers made available in the service park for this purpose.
- Containers with substances hazardous to water such as oil, fuel, cooling and brake liquids, chemical substances or cleaning agents must not contain more than 20 litres per unit. No more than 100 litres of the above substances may be stored inside a vehicle if no safety devices such as collecting tray are provided.
Any such empty containers must be disposed at the collection points for hazardous goods inside the service park and/or with Vital Equipment for fuel containing devices.
- To enable a smooth operation of the rescue teams in case of an accident, all containers with liquid and non-liquid chemicals (e.g. cleaning agents) must carry labels which clearly identify their contents.
- Smoking is forbidden at a distance of less than 10m from containers with inflammable contents (e.g. fuel for generators), even if the containers have been emptied. A solid barrier must be provided between the storage area of any such containers and eventual spectator areas before, during and after their use.

5.5 CASH DEPOSIT

Each area in the service park must be left in a clean condition and without any rubbish. Before leaving the service park, each competitor must report to the service park headquarters staff during the service park opening hours to get clearance for the corresponding area. On Sunday, 23 August 2015, the staff will be available until 22:00hrs and on Monday, 24 August 2015, between 08:00 and 12:00hrs (or upon special agreement).

Please note that for this purpose, a cash deposit of 100 € for each competitor will be required at Administrative Checks. Each competitor will get a corresponding receipt and this deposit

will be reimbursed by the service park HQ staff upon submission of this receipt and after clearance of the competitor's service park area.

5.6 SERVICE PARK DETAILS

See general draft layout V2 in the Appendix 3!

Allocation of service areas:

The final allocation will be available at the Rally Headquarters Trier and circulated as information until Saturday, 15 August 2015, at the latest.

Access times for the service vehicles:

Saturday	15 August 2015	12:00–18:00 (only P1/P2/P3)
Sunday	16 August 2015	08:00–18:00 (non priority drivers only upon previous notice/ agreement)
Monday	17 August 2015	07:00–22:00
Tuesday	18 August 2015	07:00–23:00
Wednesday	19 August 2015	07:00–24:00
Thursday	20 August 2015	06:00–24:00
Friday	21 August 2015	05:00–00:30 (Saturday)
Saturday	22 August 2015	04:30–02:00 (Sunday)
Sunday	23 August 2015	from 04:30

Or upon special arrangement with the organiser!

5.7 REMOTE TYRE FITTING ZONES

A remote tyre fitting zone pursuant to Art. 52.1 of the 2015 FIA WRC Sporting Regulations will be established in front of SS 11/15 (Saturday).

Details on the transport of tyres to the tyre fitting zones, permitted team vehicles and other points will be published in the Supplementary Regulations.

5.8 RECOVERY OF RETIRED CARS

Generally, all retired cars must be recovered by their team personnel.

The organiser has defined "access/meeting points" for each special stage where team personnel wishing to recover their car can gain access and/or be picked up by a special stage marshal to be escorted to the retired car. The definition of the most suitable meeting point and time will be agreed between Rally Control and the competitor concerned.

This procedure should help in getting the retired cars back to the Parc fermé / service park as quickly as possible. The clerk of the course has nominated Katja Rommelfanger and Simone Schleimer to coordinate any such agreements, both will be in Rally Control. Phone contact: Will be given in a later Communication by the Clerk of the Course.

According to circumstances, individual arrangements such as transport of a retired car by the organiser can also be agreed.

The access/meeting points of each special stage with numbering system will be shown in Rally Guide 2.

5.9 PARC FERME FOR RETIRED CARS WISHING TO RE-START

All cars:

The Parc Fermé mentioned in the 2015 FIA WRC Sporting Regulations Article 47.1 for all crews wishing to re-start under Article 46 is the Regrouping Area **Messepark Trier**, same area as between TCs "Regroup Technical Zone IN" and "Regroup OUT – Service IN".

All these cars will re-start from TC 8E and accordingly 17E (Service IN) where they must report at their scheduled time, calculated from the published re-start time plus the target time of 2 minutes to Service IN.

The time cards for Rally 2 cars will be issued at TC 8E /17E.

6. TWO-WAY RADIO

6.1 APPLICATION PROCEDURE

In Germany, the use of radio transmitters is subject to the official assignment of frequencies by the Federal Network Agency for Electricity, Gas, Telecommunications, Posts and Railway

(Bundesnetzagentur) in Mainz. Due to the geographical proximity of France, Belgium, Luxembourg and the Netherlands, all applications for a temporary use assignment must be submitted **until Monday, 1st June 2015, at latest** per mail or fax to the contact specified under point 6.2. **Late applications may be refused.**

6.2 CONTACT DETAILS

Bundesnetzagentur, Ref 223, Canisiusstr. 21, D - 55122 Mainz / Germany
e-mail: ShortTerm@BNetzA.de

6.3 APPLICATION FORM

An application form can be found on the organiser's website www.adac.de/rallye-deutschland, in the section "Competitors" and "Forms" (additional information is also available on the website www.bundesnetzagentur.de/kurzzeitfrequenzzuteilungen).

The official fee payable is:

130,- € for each channel assigned for temporary use (up to 30 days), and 50,- € for each additional channel.

The use of frequencies without a valid frequency assignment constitutes may result in a fine of up to € 500 000.

7. FUEL AND TYRES

7.1 FUEL / GENERAL CONDITIONS

All FIA Priority drivers must use FIA fuel as provided by the supplier appointed by the FIA for 2015 which is Petrochem Carless, who have authorised Vital Equipment Ltd to carry out fuel ordering, supply and refuel services.

Non Priority drivers may use either FIA fuel following the same conditions and rules as the Priority drivers, or commercially available **pump fuel, dispensed only from pumps** at filling stations **marked in the Road Book**. A provisional summary of these filling stations is given under point 7.3 below. **Should a particular car not be able to cover the distance between two corresponding filling stations due to the individual fuel consumption and the individual fuel tank capacity, FIA fuel may be ordered and refuelled at the FIA refuel zones (deadlines for ordering must be respected!!).**

For environmental and safety reasons no refuelling is allowed in the Service Park (no refuel from cans, drums or similar).

The cost of the FIA fuel including taxes and refuel services is **€ 5.48** per litre (inclusive of VAT), dispensed into rally cars.

According to article 59.3.2 of the 2015 FIA WRC Sporting Regulations, all competitors are required to fit FIA-specified refuel couplings, except non priority drivers using a car which retains the standard tank. Cars of priority drivers specifically must be fitted with FIA fuel sample couplings (Art. 59.3.5). Cars equipped solely with FIA specified refuel couplings and using fuel as per Art. 59.1.2 must transport the adaptor in the car and show it at pre-event scrutineering (Art. 59.3.7).

7.2 HOW TO ORDER FIA FUEL

All competitors using FIA fuel must place their fuel order directly with Vital Equipment Ltd no later than the **deadline specified under point 3** of this Rally Guide by e-mail to wrcfuelorder@vitalequipment.co.uk or by fax to +44 1981 240326.

The order form issued by Carless-Vital Equipment is available on the event website: www.adac.de/rallye-deutschland. (section Competitors and FORMS).

Payment details are specified on the order form.

It is a condition of supply that payment must be received in full before delivery can be made. The balance of non-used fuel will be credited after the rally.

7.3 REFUEL ZONES (RZ)

Refuel zones for all drivers using FIA fuel will be established as specified in the Itinerary.

Remote refuel zones for drivers using FIA fuel will be established on Friday and Saturday as indicated in the Itinerary.

Any refuelling from the beginning of the refuel service times may only be carried out in these zones. Appropriate equipment will be brought to the remote refuel zone so that a centralised refuel service will also be available there.

Refuel points for all non-priority drivers using pump fuel - dispensed only from pumps at filling stations - will be marked in the Road-Books. A provisional summary is given below.

Road Section	Distance Info	Name (Quality/Opening hours)
TC 0/4C to TC 1/5	1.15 km after TC 0/4C	TOTAL TR-Euren (98 Octane, 06:00-22:00h)
SS 1/5 to TC 2/6	19.57 km after finish SS 1/5	ARAL Bitburg-Süd (102 Octane, 24h) - OFF RALLY ITINERARY (1.53 km) -
	21.99 km after finish SS 1/5	ED Bitburg (98 Octane, 07:00-21:00h) - OFF RALLY ITINERARY (0.30 km) -
SS 2/6 to TC 3/7	53,18 km after finish SS 2/6	ED Maring (98 Oktan, 07:00-22:00h)
SS 4/8 to TC 4A/8A	6.32 km after finish SS 4/8	ARAL Hetzerath (98 Octane, 24h)
	36.16 km after finish SS 4/8	TOTAL TR-Euren (98 Octane, 06:00-22:00 h) -OFF RALLY ITINERARY (1.52 km)
TC 8F/13E to TC 9/14	24.2 km after TC 8F/13E	ARAL Hetzerath (98 Octane, 24h)
SS 9/14 to TC 10/15	17.07 km after finish SS 9/14	ARAL Morbach (102 Octane, 05:00-22:00h)
	18.11 km after finish SS 9/14	ESSO Morbach (98 Octane, 05:30-22:00h)
	39,23 km after finish SS 9/14	Pump fuel Ford (98 Octane, 8:00-12:00)
SS 9 to TC 10	43.49 km after finish SS 9	ARAL Steinautal (102 Octane, 08:00-22:00h)
SS 10 to TC 11	25.71 km after finish SS 10	ARAL Steinautal (102 Octane, 08:00-22:00h)
	30.22 km after finish SS 10	Pump fuel Ford (98 Octane, 8:00-12:00)
SS 13 to TC 13A	12.33 km after finish SS 13	Pump fuel Ford (98 Octane, 8:00-12:00/24h CAT)
	14.77 km after finish SS 13	ARAL Birkenfeld (102 Octane, 08:00-22:00h)
	15.08 km after finish SS 13	AGIP Birkenfeld (98 Octane, 07:00-22:00h)
	51.89 km after finish SS 13	ED Kell (98 Octane, 07:00-21:00h)
SS 16 to TC 17	12.33 km after finish SS 16	Pump fuel Ford (98 Octane, 8:00-12:00/24h CAT)
	16.65 km after finish SS 16	ARAL Steinautal (102 Octane, 08:00-22:00h)
SS 17 to TC 17A	45.71 km after finish SS 17	ARAL Hochwald (102 Octane, 24h)
	93.36 km after finish SS 17	SHELL Trier (100 Octane, 06:00-22:00h)
TC 17F/19C to TC 18/20	1.67 km after TC 17F/19C	SHELL Trier (100 Octane, 07:00-22:00h)
	5.70 km after TC 17F/19C	TOTAL Trier (98 Octane, 24h)
SS 19/21 to TC 19A/21A	11.47 km after finish SS 19/21	ARAL Hetzerath (98 Octane, 24h)

7.4 TYRES

7.4.1 Nominated tyre companies

The FIA nominated WRC tyre suppliers for 2015 are Michelin, Dmack, Pirelli and Hankook. Contact details are specified in the 2015 FIA WRC Sporting Regulations, point 61.1.1.

7.4.2 For more details refer to Articles 60 to 62 and the Appendix V of the 2015 FIA WRC Sporting Regulations. Additional instructions and order forms will be available on the organiser's website in the section "Competitors" and "Forms".

8. IMPORT OF VEHICLES AND SPARE PARTS

8.1 NATIONAL LAWS / CUSTOM CLEARANCE

Vehicles coming from the European Union do not require any customs specific documents to pass the frontier. Vehicles from outside the European Union must show an ATA carnet, which must normally be applied for at the Chamber of Commerce in the country of origin.

Vehicles coming from the European Union but transiting Switzerland (non EU country) may contact: Oberzolldirektion, Monbijoustrasse 40, CH-3003 Bern, Phone +41 31 3226511, Fax +41 31322 7872, Website:

<http://www.ezv.admin.ch/index.html?lang=de> (German) or
<http://www.ezv.admin.ch/index.html?lang=fr> (French) or
<http://www.ezv.admin.ch/index.html?lang=it> (Italian).

9. HELICOPTER USE

9.1 REGISTRATION PROCEDURE

The registration of all helicopters operating in the rally area is to be made by the organiser. In compliance with the FIA safety regulations and the local Air Traffic Authority, every helicopter flying in support of the rally must be registered with the organisers and be familiar with the special flight guidelines.

All landing places, including the areas of the service park and of the special stages, will be described in maps and in the helicopter guidelines, including all the GPS positions. There is no clearance to land at any other location along the special stages. The landing permission for the above-named landing places is only valid on the respective day the SS is taking place.

Attendance at the pilots' briefing as specified under point 3 of this Rally Guide is obligatory for all pilots. All documents, manuals, instructions and identifications will be distributed during this briefing. **For any pilot unable to attend this mandatory briefing, an extra briefing may be agreed upon request. Any extra briefing (time and location to be agreed) is subject to an additional fee of 200€ (VAT to be added).**

All pilots must be in possession of a valid professional pilot licence CPL (H).

After registration and payment of the fee of 2.300 € (VAT to be added), all pilots will receive additional information until one week before the event at latest. As correspondence will be made by e-mail, an e-mail address must be specified on the registration form.

The registration closing date is specified under point 3. Any late application will result in a surcharge of 10% to be added to the aforementioned fee.

9.2 APPLICATION FORM FOR REGISTRATION

The registration application form must be sent **per e-mail** to rainer.friedemann@rallye-deutschland.de or per fax to +49 261 1303-299 until the deadline as specified under point 3 of this Rally Guide at the latest. Registration forms are available on the organiser's website ("Forms") or upon request.

It is compulsory to add the AOC number (Air Operator Certificate) on the application form and to attach a copy.

9.3 CONTACT DETAILS FOR NATIONAL HELICOPTER SERVICES

Rotorflug, Kaiserslautern	+49 631 3109910
Heli Transair, Egelsbach	+49 6103 94150
Heli Flight, Reichelsheim	+49 6035 91000
LGM Luftfahrt, Mannheim	+49 621 328180
Meravo, Heilbronn	+49 7136 6051

10. HOSPITALITY ARRANGEMENTS

For details of hospitality arrangements, prices and further information please contact:
ADAC Beteiligungs- und Wirtschaftsdienst GmbH, Mr. Frederic Elsner
Hansastraße 19 – D-80686 München
Phone: +49 89 7676 4459, Fax: +49 89 7676 4430
Email: frederic.elsner@adac.de

11. HOTEL ACCOMMODATION / RESERVATION

Contact Details for reservations:

**Tourist-Information
der Trier Tourismus und Marketing GmbH**
An der Porta Nigra
D-54290 Trier
T +49 (0) 651 / 97808 16/14

Tourismus Zentrale Saarland GmbH
Franz-Josef-Röder-Straße 17
D-66119 Saarbrücken
T +49 (0) 681 / 92 72 00
F +49 (0) 681 / 92 72 040

F +49 (0) 0651 / 97808 69
hotel@trier-info.de
www.trier-info.de

Mosellandtouristik GmbH
Kordelweg 1
D-54463 Bernkastel-Kues
T +49 (0) 6531 / 97 33 0
F +49 (0) 6531 / 97 33 33
info@mosellandtouristik.de
www.mosellandtouristik.de

info@tz-s.de
www.tourismus.saarland.de

Hunsrück-Touristik GmbH
Gebäude 663
D-55483 Hahn-Flughafen
T +49 (0) 6543 / 50 77 00
F +49 (0) 6543 / 50 77 09
info@hunsruecktouristik.de
www.hunsruecktouristik.de

Additional contacts for hotel reservations can be found on the event website
www.adac.de/rallye-deutschland.

12. RECONNAISSANCE

12.1 REGISTRATION

Date and time: Monday, 17 August 2015, 14:00 – 20:00 at the Rally HQ Trier.

12.2 REGISTRATION PROCEDURE

Prior to reconnaissance, all crews must complete a registration form and collect a reconnaissance pass and a recce vehicle identification at the Rally Headquarters Trier (see Article 3.2). The material will be given to the drivers personally or to a representative duly certified in writing at the Rally Secretariat.

The identification number panels (small format) must be affixed to the upper side of the windscreen and of the rear window, in the centre. The fluorescent orange numbers issued must be placed at the top of both rear side windows. All identifications must be kept visible for the whole duration of the recce period. After the recce the recce-stickers must be removed.

12.3 SUMMARY OF SPECIFIC REGULATIONS AND INSTRUCTIONS FOR RECCE

12.3.1 Direction

Each crew may drive the special stages only in **the same direction as the rally**, unless permitted to drive in the opposite direction for very short sections if published in a Communication by the Clerk of the Course. The crews must always enter and leave the special stages through the start and stop controls.

12.3.2 Number of passages

Each driver may **not** cover each of the 10 different special stages **more than two** times.

12.3.3 Respect of traffic laws and driving behaviour

All Road Traffic Laws must be strictly observed and the safety and rights of other road users must be respected during reconnaissance. All crews must drive in a manner that does not endanger or inconvenience other traffic or people living near the stages. Competitors must bear in mind that the special stages are not yet closed to public or residential traffic during recce.

12.3.4 Number of persons on board

During each passage through a special stage, a maximum of 2 persons (the crew) are permitted in the car.

12.3.5 Maximum speed

At all times the maximum speed on special stages will be 90 km/h unless a lower limit is indicated by traffic signs, by signs placed by the organiser or in the Road Books.

12.3.6 Reconnaissance pass

Crews must stop at the start and at the stop of each special stage where a rally official will endorse the crews' reconnaissance pass and at any other location where instructed. This pass must be returned at the Rally Headquarters Trier or at the service park Headquarters Trier until **Thursday, 20 August 2015, 10:00hrs**, at the latest.

12.3.7 Reconnaissance vehicles

All cars used for reconnaissance must comply with the prescriptions of Article 25.1 of the 2015 FIA WRC Sporting Regulations.

12.3.8 Service during reconnaissance

In compliance with Article 25.4.6 of the 2015 FIA WRC Sporting Regulations, each authorised vehicle will be provided with one "RECCE SERVICE" car pass by the organiser.

12.3.9 Participation in reconnaissance only

Any driver wishing to take part in reconnaissance only (see also Art. 25.5 of the 2015 FIA WRC Sporting Regulations) must complete an application form which is available from the organiser and pay a fee of 1.000 € (19% VAT to be added) for taking part in this reconnaissance. The form should be returned until the entry closing date.

12.3.10 Other reminders

For given reasons, all competitors are reminded of the following traffic laws applicable in Germany:

- Always keep to the right!
- Safety belts must always be worn!
- Right has right-of-way!

All speed limits signposted or otherwise marked must be STRICTLY respected, both on special stages and on road sections. Both organiser and police will carry out speed controls!

The instructions given in the Road-Books only for recce are to be respected, in particular when joining or crossing main roads.

The chicanes on the special stage roads will already be set up during recce.

12.4 INSTALLATION OF SPEED CONTROL CHECKING DEVICES

In accordance with Article 25.4.4 of the 2015 FIA WRC Sporting Regulations, all the cars of priority drivers (P1, P2, P3) must carry recce GPS recorders on board during reconnaissance. Location and times for collection and return are specified under point 3 of this Rally Guide. Should additional, non priority drivers be required to carry GPS recorders on board this will be communicated in a Bulletin. A fee may be applied for the rental of this equipment.

12.5 OTHER POINTS

- Intervention cars equipped with fire-fighting and recovery material will be on stand-by during recce. They can also provide assistance in case of medical problems and give first aid. Their positions and mobile phone numbers will be published in Rally Guide 2.
- A list of recommended, suitable service points during recce will also be published in Rally Guide 2.
- A summary of Fuel stations along the recce route will also be published in Rally Guide 2.

13. SCRUTINEERING, SEALING AND MARKING

13.1 DATE, PLACE AND TIME WINDOW

Date, place and time window: See point 3 in this Rally Guide!
Individual times will be published in a Bulletin.

13.2 PREPARATIONS TO BE MADE BEFORE THE CAR IS BROUGHT TO SCRUTINEERING

Administrative checks:

Administrative checks must be completed before the cars are presented for scrutineering. Competitors will receive a signed Administrative Clearance Form which must be submitted at scrutineering. Please remember the requirements for an ASN authorization for foreign competitors, drivers and co-drivers (see Article 21.3 FIA WRC Sporting Regulations and Article 3.9.4 FIA International Sporting Code).

Rear window panel:

The rear window panel as per Article 18.3 of the 2015 FIA WRC Sporting Regulations shall be positioned at the top of the rear window, centred right (seen in driving direction).

Other Reminders:

- Preparations for sealing and marking

All cars must have their sump guards removed for sealing of gearboxes and differentials, and be kept with the car for the purpose of weighing.

The bodyshell and engine will be marked and to facilitate this, each competitor must prepare their car so that a wire, a plate and a seal may be placed in a visible location on the engine block.

Please make sure that your car will arrive at pre-event scrutineering ready to be sealed!

- **Homologation form**
The homologation form of the rally car and certificates for the roll cage and fuel tank must be brought to scrutineering.
- **Drivers' Equipment**
The provisions of the Appendix L, Chapter III (Drivers' Equipment), to the 2015 FIA International Sporting Code should be carefully studied and must be respected, in particular in relation to the **complete clothing**. The regulations on drivers' equipment apply to Shakedown as well.
In the FIA World Rally Championship, helmets homologated to the FIA Standard 8860 – Advanced Helmet Test Specification must be worn by all P1 and P2 drivers and they are strongly recommended for all the other drivers (ISC Appendix L, Chapter III, Art. 1.1.)
FIA approved FHR systems are obligatory for ALL drivers and their co-drivers (for detailed specifications see ISC Appendix L, Chapter III, Art. 3).
At scrutineering competitors must produce all items of clothing including helmets and HANS intended to be used. Compliance with Appendix L Chapter III will be checked.
- **Mud Flaps (Appendix J Article 252.7.7)**
Mud flaps to prevent splashing towards the front in conformity with Article 252.7.7 of the Appendix J to the 2015 FIA International Sporting Code are authorised.
- **Windows/Nets (Appendix J Article 253.11)**
The use of silvered or tinted films is not authorized.
- **Extinguishing systems (Appendix J Article 253.7.2.1)**
All cars must be equipped with an extinguishing system from Technical List n°16 : "Extinguisher systems homologated by the FIA".
In rallies, the minimum quantity of extinguishant must be 3 kg.
- **Noise level**
In accordance with Article 252.3.6 of the Appendix J to the 2015 FIA International Sporting Code.
- **On-board cameras**
The competitor of any car which carries an on-board camera must have the prior agreement of the Promoter (accreditation@wrc.com). Authorised cameras will be identified by an adhesive decal and must be mounted in the car at the time of scrutineering. For details refer to Article 65.1 of the 2015 FIA WRC Sporting Regulations.
It is reminded that the mountings of cameras and recorder must be able to withstand a deceleration of 25 g.
- **Various**
All competitors should carefully study all the technical regulations relevant to their cars, in particular including rollcage welding, seat supports, mandatory belt cutters, the fixation of spare parts and tools inside the cockpit, etc.

13.3 COLLECTION / RETURN POINTS FOR SAFETY TRACKING SYSTEMS

Collection times for the Safety Tracking System are given in point 3 of this Rally Guide. Non-priority drivers may be required to leave a credit card deposit for the equipment in the event of loss / damage. The systems must be fitted and connected in all competitors' cars before arrival at scrutineering where they will be checked. Installation instructions will be published in Rally Guide 2. The systems must be returned within 30 minutes of the results being declared final at the same location where they were distributed. In the case of retirement, all the tracking equipment must be returned to SIT Sports at the Service Park as soon as possible after retirement.

13.4 FINAL SCRUTINEERING

Location and time: See point 3 of this Rally Guide.
The cars selected for final scrutineering will be informed in writing. They are requested to provide proper equipment (including all sealed spare parts) and technicians at the final scrutineering venue.

14. SHAKEDOWN KONZ

14.1 GENERAL INFORMATION

Timetable:

See Point 3. Programme

Location:

Shakedown Konz will be South of Trier (same location as in 2014).

Distances to service park (see also Road Book 1):

Service park – Shakedown start:	10.46 km
Shakedown Stop – Service park:	10.75 km
Shakedown Stop – Shakedown Start:	6.41 km
Shakedown stage length:	4.55 km.

Shakedown Road Book:

A Road Book indicating the itinerary from

- Service park to shakedown start,
- Shakedown stage,
- Shakedown stop back to shakedown start and
- Shakedown stop to service park

is included in Road Book 1.

Service:

In the main service park Messepark Trier.

14.2 INSTRUCTIONS, REGISTRATION AND INFORMATION

The shakedown registration form for all P1/P2 drivers not entered by a Manufacturer/WRC Team and non-priority drivers wishing to participate in Shakedown must arrive at the Rally Secretariat until **Monday, 17 August 2015, 20:00hrs, at the latest**. Their participation is subject to paying a fee of 100€ for each car. This fee is already included in the entry packages for FIA priority drivers and for the FIA Junior WRC competitors.

All safety requirements as in Appendix III to the 2015 FIA WRC Sporting Regulations must be respected during Shakedown and any person found on board the car who is not part of the entry for the rally must have signed a disclaimer which indemnifies the Organisers (Art. 29.3 WRC Regulations). Disclaimer forms will be available at the Rally HQ Trier and some copies will also be available at the Shakedown on-site.

Control cards will be made available for use and stage times will be available at the Service Park.

15. START PROCEDURE

15.1 CEREMONIAL START PROCEDURE AND ORDER

Date and time: Thursday, 20 August 2015, from 20:50, podium at the Porta Nigra Trier.

The ceremonial start for all cars will be given in reverse order of the start list for Section 1, basically all in one minute intervals.

Time cards will not be issued.

The rally cars will be brought in convoys from the service park to the ceremonial start location (Porta Nigra Trier). To put together the groups of cars, all rally cars must be brought into the holding area Messepark (technical zone/regrouping area) under the following conditions:

- The cars may be brought by a competitor's representative.
- Each car must enter the holding area on Thursday, 20 August 2015, between 19:00 and up to 60 minutes before each individual ceremonial start time.

Access to the holding area is limited to team members and media representatives with appropriate identification. A team representative may drive the car from the holding area Messepark Trier to the waiting zone in front of the ceremonial start at the Porta Nigra Trier.

Crew members must wear their approved overalls at the ceremonial start.

Applicable for all cars, except the cars of P1 drivers:

The first convoy (positions 1 – 5 on the ceremonial start list) is scheduled to leave the holding area (regrouping area service park) to the ceremonial start at approximately 20:20hrs, the second one (positions 6 – 10) at 20:25hrs and the third one (positions 11 – 15) at 20:30h. The remaining convoys are scheduled to start in 5 minutes intervals with groups of 5 cars, in the order of the ceremonial start list, starting from approximately 20:35hrs.

P1 drivers and cars:

According to the programme at the moment of the publication of this Rally Guide, the ceremonial start procedure will be preceded by an autograph session applicable for all P1 drivers with their cars to be presented at the Trier 'Hauptmarkt' between 19:30 and 20:00hrs on Thursday, 20 August 2015. Detailed schedules (convoys from the service park to Hauptmarkt accompanied by police, transfer of the cars to the holding area Porta Nigra after the autograph session, shuttle services for drivers and team members, etc.) and detailed plans will be published at a later date. The cars may be driven by a competitor's representative for all the transfers involved.

After the podium procedure, each car and crew must follow the itinerary which will be given in Rally Guide 2 to leave the start area, until they join public traffic area from where the itinerary is free. More detailed plans of the areas will be published in Rally Guide 2.

15.2 START OF THE RALLY

The start of the competitive element of the rally will be given on Friday, 21 August 2015, from TC0 Trier Messepark (see Itinerary). Time cars will be issued at TC0.

16. FINISH PROCEDURE

The competitive element of the rally will conclude at TC 21C (Service OUT/Parc Fermé IN). From this point, all cars are subject to parc fermé rules until the parc fermé is opened at the instruction of the stewards.

After the conclusion of the Rally at TC 21C, all classified cars shall be driven in convoys escorted by the police from the Parc Fermé Messepark to the finish procedure at the podium Porta Nigra. Crew members must wear their approved overalls.

The exact time schedule for these convoys will be published in a Bulletin.

Access to the holding area in front of the finish podium Porta Nigra Trier will be limited to officials and to media representatives holding the appropriate pass.

After the podium procedure, competitors must drive their cars to a holding area adjacent to the Porta Nigra as instructed by the officials (see also Road Book 3, Trier Finish to Trier Parc Fermé). Each crew may nominate a driver to drive the car under the organiser's supervision (convoy) from the holding area to the final Parc fermé Viehmarktplatz Trier and/or to final scrutineering.

In the event that the car is not driveable for any of the above procedures, this must be reported to the Clerk of the Course who will arrange transport by a recovery vehicle, if possible. In any case, the crew members concerned must still attend the podium finish procedure.

Team members wishing to take over the rally car from their drivers for the subsequent and last convoy from Porta Nigra to Parc fermé Viehmarktplatz Trier / final scrutineering may enter the post podium procedure finish holding area from the Nordallee (= from west), then turn right in front of the Porta Nigra to the Simeonstiftplatz. Follow the marshals' instructions to park your car in front of the junction Margarethengäßchen. A car sticker AUXILIARY must be displayed to gain access.

Drivers Pick Up from Parc Fermé Viehmarktplatz Trier:

Team members picking up their drivers at the Parc fermé Viehmarktplatz Trier are kindly requested to park their car whilst waiting in the "Viehmarktstrasse" as shown below. Access through "Hindenburgstraße"!



Car Pick Up from Final Parc Fermé:

Only upon presentation of the parc fermé pass issued with the rally materials may a car be removed from the parc fermé by the drivers or their representatives, once the stewards have authorised to open the final parc fermé. There will be **no more security** from 1 hour after the opening of the final parc fermé.

17. PR ACTIVITIES

Will be published at a later date.

18. MEDIA

18.1 CONTACT DETAILS BEFORE THE EVENT

ADAC Rallye Deutschland – media contact
c/o die agentour GmbH
Peter Linke
Rückertstrasse 4
D-80336 München

Tel.: +49 89 530997-0
Fax.: +49 89 530997-99

E-Mail: media@adac-rallye-deutschland.de

18.2 ACCREDITATION PROCEDURE, CRITERIA AND DEADLINE

The ADAC Rallye Deutschland has to apply the guidelines for media accreditation set out by the FIA.

Closing date for national media is 22 July 2015.

Closing date for international media is 29 July 2015.

Accreditation information can be found on the website:

www.adac.de/motorsport in the media area from 15 April 2015.

18.3 FORM FOR RESERVATION OF FACILITIES

The form for the reservation of facilities (part of the accreditation form) can be found on the website www.adac.de/motorsport in the media area from 15 April 2015.

19. MEDICAL AND SAFETY SERVICE

19.1 EVENT EMERGENCY NUMBER

Organisers Hotline for Emergency Cases: TBA (Rally Guide 2)

19.2 MEDICAL AND SAFETY SERVICES

Hospitals in the area:

Ambulance/ Doctors on call		+49 122
Trier (Barmherzige Brüder)	Nordallee 1	+49 651 2080
Bitburg (Marienhaus Klinikum)	Krankenhausstr. 1	+49 6561 64-0
Idar-Oberstein	Dr. Otmar-Kohler Str. 2	+49 6781 660
Wittlich	Koblenzer Str. 91	+49 6571 150
Hermeskeil	Koblenzer Str. 23	+49 6503 810
St. Wendel	Am Hirschberg	+49 6851 59-01
Kusel	Im Flur 1	+49 6381 930

Medicine emergencies:

Doctor on call - (weekends/holidays) +49 651 45555

Police:

General Police Emergency Call	+49 110
Police Headquarters Trier	+49 651 9779-0
Police Headquarters Prüm	+49 6551 942-0
Police Headquarters St. Wendel	+49 6851 8980
Police Headquarters Türkismühle	+49 6852 909-0
Police Headquarters Baumholder	+49 6783 9910
Police Headquarters Kusel	+49 6381 9190

Fire Fighting Service:

Fire Department +49 112

Breakdown Services:

ADAC Breakdown Service 0180 222222 (land line)
22 22 22 (mobile inside Germany)
+49 89 222222 (from abroad)
01805 – 248000 (Truck Service)
+49 651 1709850-0
Auto Buschmann, Ottostr. 3, +49 651 87070 (day and night)
Auto Lieser, Trier, Luxemburger Str. 91
Auto Jägen, Bitburg +49 6561 95000
Abschleppdienst Werner, Baumholder +49 6783 5937

19.3 LOCATION OF PRINCIPAL HOSPITALS

Minor injuries

- Westpfalz-Klinikum Kusel (+49 6381 930)	N: 49° 32,78'	E: 7° 22,636'
- Elisabeth Krankenhaus Birkenfeld (+49 6782 180)	N: 49° 38,771'	E: 7° 9,620'
- Marienkrankenhaus St.Wendel (+49 6851 5901)	N: 49° 27,252'	E: 7° 10,709'
- Krankenhaus Ottweiler (+49 6824 3070)	N: 49° 24,902'	E: 7° 10,075'
- St. Josef Krankenhaus Hermeskeil (+49 6503 810)	N: 49° 39,526'	E: 6° 56,915'

Major injuries

- St. Elisabeth Krankenhaus Wittlich (+49 6571 150)	N: 50° 0,057'	E: 6° 53,502'
- Krankenhaus Barmherzige Brüder Trier (+49 651 2080)	N: 49° 45,762'	E: 6° 38,378'
- Klinikum Idar-Oberstein (+49 6781 660)	N: 49° 42,975'	E: 7° 19,280'
- Städtisches Klinikum Neunkirchen (+49 6821 180)	N: 49° 20,479'	E: 7° 11,009'
- Marienhaus Klinikum Eifel, Bitburg (+49 6561 640)	N: 49° 58,290'	E: 6° 31,625'

Multiple trauma

- Bundeswehrzentral Krankenhaus Koblenz (+49 261 2810)	N: 50° 22,097'	E: 7° 32,561'
- Universitätsklinik Homburg (+49 6841 160)	N: 49° 18,441'	E: 7° 20,726'
- Klinikum Saarbrücken (+49 681 9630)	N: 49° 13,256'	E: 6° 59,730'
- Unfallklinik Ludwigshafen (+49 621 68100)	N: 49° 29,126'	E: 8° 23,331'

20. LIST OF USEFUL FACTS AND SERVICES

20.1 REGROUPS BILSTEIN MANDERN (SATURDAY) AND FÖHREN (SUNDAY)

A shelter/lounge for the drivers will be available at both regroup.

Article 42.5.2 of the 2015 FIA WRC Sporting Regulations is not applicable for the Regroups Bilstein Mandern and Föhren.

Regroup Föhren (Sunday):

No media zone as per Article 31.7 of the 2015 FIA WRC Sporting Regulations will be established prior to the regroup park Föhren. A shelter for the use of the drivers during their regroup time will be available on-site.

20.2 ROUTE NOTE CARS

All drivers entered with a World Rally car: The time for the distribution of the speed control devices as used during reconnaissance (see Art. 11.5.1 of the 2015 FIA WRC Sporting Regulations) shall be coordinated with the official supplier at the latest when the recce systems are returned.

All other competitors: With reference to Article 11.5.2 of the 2015 FIA WRC Sporting Regulations, it is reminded that the organiser will provide a Route Note car for all crews other than crews of drivers as per Article 11.5.1 of the FIA WRC Sporting Regulations. The information delivered will be based on data given in the Road-Book (e.g. box number and SS distance). This should be taken into consideration in the preparation of the pace notes.

The time window for this car may vary from the time schedule issued by the organiser for the other Route Note cars.

20.3 ADDITIONAL SERVICES AT SPECIAL STAGES

- **Chemical toilets** will be available in the surrounding of each TC preceding a special stage start.

- **Drinking water at SS Stop POINTS:** The organiser will make available drinking water for the drivers at each SS stop point. Drivers are kindly requested to carry the plastic bottles on board until the next time control where they can be disposed.

20.4 CLIMATE

Temperatures throughout the country with warm summers and cold winters, rain falls throughout the year. The annual average temperature in August in Germany is approximately between 12 degrees Celsius (night) and 22 degrees Celsius (day).

Weather forecasts can be found on the Internet at: www.wetter.de, www.wetter.com, and through the German Weather Service ("Deutscher Wetterdienst") on www.dwd.de (then go to "Wetter + Warnungen" and "Regionenwetter" – only German version available). The German Weather Service also offers weather forecasts directly from the meteorologist (upon payment). Three different variants are available (verbal information at a fixed rate, verbal information charged per minute or individual written weather forecast). Information and booking through phone number +49 69 8062-0 (24 hours service).

20.5 TIME ZONE

GMT + 2 (summer time from last Sunday in March to Saturday before last Sunday in October).

20.6 CURRENCY

EURO (€). Other currencies and traveller cheques can be exchanged at banks, most post offices, airports, major railway stations, ports and major hotels at the official exchange rates. Restrictions on the import or export of either local or foreign currency apply from an amount of 10.000€ upward and are published on the Internet at www.zoll.de.

20.7 POWER SUPPLY

230 volts AC, 50 Hz. European style round two-pin plugs are in use.

20.8 DRIVING IN GERMANY

German Toll Collect:

Since the 1st of January 2005 a motorway toll for goods vehicles over 12 metric tons is applicable. Detailed information in various languages can be found in the internet under www.toll-collect.de.

Sunday traffic ban on lorries:

Vehicles with a gross permitted weight of 7.5 tons or more as well as trailers to lorries are prohibited from all public roads on Sundays and public holidays from 00:00 to 22:00.

Note: It is reminded that Saturday, 15 August 2015 (in the week previous to the rally week), is a public holiday in the German Federal Land "Saarland" and in "Bavaria", as well as in various adjacent countries (amongst others in Luxembourg, Austria, parts of Switzerland, France and Belgium).

Waivers:

In co-operation with the local authorities, the organisers will arrange for waivers for trucks to be permitted to leave Trier on the rally Sunday (23 August 2015), if required. Any party requiring a waiver should report at HQ Trier Rally Office during the opening times and complete the application forms available there (required information: name and address of the applicant, truck and trailer registration plates, itinerary inside Germany and/or till the border) and will receive the permit upon payment of a fee of €50 (in cash) for each permit.

You should notify your requirements to the permanent ADAC Rallye Deutschland Rally Office in advance as soon as this information is available so that the necessary number of forms can be ordered and will be available on-site.

Saturday traffic ban on lorries: In addition to the traffic ban on Sundays which is valid all the year round, there are restrictions for lorries with a maximum permissible weight of 7,5 metric tons as well as trailers to lorries on all Saturdays from 1 July to 31 August, between 07:00 and 20:00. The routes affected by the ban are listed in the Internet under http://bundesrecht.juris.de/ferreisev_1985/_1.html.

Speed limits:	Built-up areas	50 km/h
	Main roads	100 km/h
	Motorways	130 km/h (recommended speed)
	or as otherwise as signposted.	
Safety belts:	Seat belts must be worn in the front and back.	
Mobile Telephones:	It is illegal to use hand-held mobile telephone while driving. It is legal to use a hands free unit.	
Right has right-of-way:	When two public roads cross at an uncontrolled intersection, then the right-of-way is always given to traffic approaching from the right.	
First aid box:	All vehicles must carry a first aid box (in accordance with Standard DIN 13164) on board.	
Reflective triangle:	All vehicles must carry a reflective triangle on board. See also Article 40.4 of the 2015 FIA WRC Sporting Regulations.	
SOS:	Throughout the rally, all the rally cars must carry a red "SOS sign and on the reverse a green "OK" sign measuring at least 42 cm x 29.7 cm (A3) on board. See also Article 40.2.1 of the 2015 FIA WRC Sporting Regulations	
Safety vests:	From 01.07.2014 on, at least one safety vest (red, yellow or orange, standard EN471 or EN ISO 20471:2013) must be carried on board of each vehicle. This applies to all passenger cars, trucks and busses with a German registration.	
Alcohol limit:	50mg of alcohol in the bloodstream.	

20.9 LIST OF USEFUL SERVICES - GENERAL

Directory Enquiries National	+49 11880, +49 11883
Directory Enquiries National (English speaking)	+49 11837
Directory Enquiries International	+49 11834
Time Signal	+49 180 4100100
Cancellation of credit or cash cards	+49 116116

20.10 CAR DEALERS

TRIER Area

Alfa Romeo, Trier	Ruwerer Str. 21	+49 651 20080
Audi, Trier	Loebstr. 5	+49 651 20990
BMW, Trier	Niederkircher Str. 4	+49 651 840880
Citroen, Trier	Im Speyer 7	+49 651 827490
Ford, Trier	Ruwerer Str. 21 b	+49 651 209090
Honda, Trier-Ehrang	Unter dem Dostler 1	+49 651 968030
Hyundai, Trier	Olewiger Str. 113	+49 651 937010
Jaguar, Trier	Ruwerer Str. 21	+49 651 20080
Jeep, Trier	Ruwerer Str. 21	+49 651 20080
KIA, Trier	Im Speyer 7	+49 651 827490
Mazda, Trier	Olewiger Str. 113	+49 651 937010
Mercedes Benz	Karl-Marx-Str. 62	+49 651 71000
Mini, Trier	Niederkircher Str. 4	+49 651 840880
Mitsubishi, Trierweiler	Gewerbegebiet 51b	+49 651 827380
Opel, Trier	Ruwerer Str. 21	+49 651 20080
Peugeot, Trier	Ruwerer Str. 1 B	+49 651 99530
Renault, Trier	Paulinstr. 29	+49 651 25220
Skoda, Trier	Loebstr. 5	+49 651 20990
Subaru, Trier	Im Siebenborn 14	+49 651 86305
Suzuki, Trier-Ehrang	Servaisstr. 1	+49 651 968090
Toyota, Trier	Eurener Str. 77	+49 651 827000
Volvo, Trier	Ruwerer Str. 21	+49 651 20080
VW, Trier	Loebstr. 5	+49 651 20990

BAUMHOLDER Area

BMW, Baumholder	Kuseler Str. 20	+49 6783 9945-0
Ford, Birkenfeld	Wasserschiederstr. 22	+49 6782 846
Mitsubishi, Baumholder	Bahnhofstr. 41	+49 6783 5345
Opel, Birkenfeld	Wasserschiederstr. 21	+49 6782 99880
VW/Skoda, Baumholder	Frohnhausenerstr. 28	+49 6783 99480
VW/Audi, Birkenfeld	Hochwaldstr. 2	+49 6782 99390

SAARLAND Area

BMW, St. Wendel	Werschweiler Str. 50-54	+49 6851 93120
Citroen, St. Wendel	Willi-Graf-Str. 8	+49 6851 5011
Ford, Nohfelden	St. Wendeler Str. 60	+49 6852 357
Mitsubishi, St. Wendel	Ottweiler Str. 55	+49 6851 3630
Opel, St. Wendel	Leipziger Str. 2	+49 6851 93290
Peugeot	Jakob-Stoll-Str. 2b	+49 6851 80004-0
Renault/Dacia, Tholey	Auf Rodert 2	+49 6853 5555

20.11 HIRE CAR COMPANIES

TRIER Area

Hertz, Trier	Loebstr. 4	+49 651 23137
AVIS, Trier	Herzogenbuscher Str. 35	+49 651 270770
EuropCar, Trier	Wasserweg 16	+49 651 146540
Buschmann, Trier	Ottostr. 3	+49 651 170980
Klees, Trier	Auf der Weismark 1	+49 651 1707780
Buchbinder	Kürenzer Str. 19	+49 651 99475990

BAUMHOLDER Area

EuropCar, Idar-Oberstein	Carl-Benz-Str. 3/Nahetal	+49 6781 980485
Klees, Idar-Oberstein	Mainzer Str. 106	+49 6781 981741

SAARLAND Area

Sixt, St. Wendel	Eisenbahnstr. 9	+49 1805 252525
Hentschel, St. Wendel	Essener Str. 16	+49 6851 2443

20.12 BUS RENTAL

Trier Area

Kylltal Reisen, Trier	+49 651 968900	Fax: +49 651 66118
www.kylltal-reisen.de		
Reisestudio SiM, Trier	+49 651 975080	Fax: +49 651 9750825
www.reisestudio-sim.de		
Dixius GmbH, Lorscheid	+49 6500 289	Fax: +49 6500 991145
www.dixius.de		

20.13 AIRPORTS (with distances to Trier)

Frankfurt (about 240 km)	+49 69 6900 / +49 180 63724636	www.frankfurt-airport.de
Luxembourg (about 40 km)	+352 24640	www.lux-airport.lu
Frankfurt-Hahn (about 60 km)	+49 6543 509200	www.hahn-airport.de
Saarbrücken (about 100 km)	+49 6893 83-0	www.flughafen-saarbruecken.de

20.14 COPY SERVICES (Trier Area)

Copy-Color-Art, Trier (Saarstr. 25)	+49 651 44883
Proficopy, Trier (Hornstr. 8)	+49 651 16202
Print In GmbH, Trier (Schönbornstr. 33)	+49 651 13301
Copyworld, Trier (Paulinstr. 34/36)	+49 651 46361739

20.15 CAR STICKER

PEKI GmbH, Osburg/Trier, Am Neuhaus 2	+49 6500 9141-91
Buschmann Werbung, Trier, Auf Hirtenberg 12-14	+49 651 937770
Braun Kerber, Rilchingen, Konrad-Adenauer-Str. 15c	+49 6805 913886

20.16 MAPS

Rhineland-Palatinate: Landesamt für Vermessung und Geobasisinformation Rheinland-Pfalz (LVermGeo), Mr. Bach, Ferdinand-Sauerbruch-Straße 15, D – 56073 Koblenz, Tel.: (+49) (0) 261 – 492-232, Fax: (+49) (0) 261 – 492-492, E-mail: poststelle@lvermgeo.rlp.de.

- Rally area maps in Rhineland-Palatinate 1:100.000:
C5902, C5906, C5910, C6302, C6306, C6310, C6702, C6706, C6710
- Rally area maps in Rhineland-Palatinate 1:50.000:
L5902, L5904, L6102, L6104, L6106, L6108, L6304, L6306, L6308, L6310, L6504, L6506, L6508, L6510.

20.17 MOBILE PHONES

GSM 900 and DCS 1800 networks cover the whole country. It is illegal to use a hand-held mobile telephone while driving.

20.18 SECURITY COMPANIES

Security-Service-Schmitt, L-Wasserbillig
(Luxembourg)

+352 267 14390
OR: info@security-service-schmitt.com

20.19 TAXIS

BAUMHOLDER Area

Taxen-Dienst +49 6783 2123

TRIER Area

Omnitour	+49 651 88044
Taxi-Zentrale	+49 651 12012
Taxi Franken	+49 651 32182
Gauer & Dahm	+49 651 48048

20.20 OTHER IMPORTANT PHONE NUMBERS

Outgoing Country Dialling Codes

Austria	0043	Netherlands	0031
Belgium	0032	Norway	0047
Czech Republic	00420	Poland	0048
Denmark	0045	Portugal	00351
Finland	00358	Russia	007
France	0033	Sweden	0046
Great Britain	0044	Switzerland	0041
Greece	0030	Spain	0034
Italy	0039	Turkey	0090
Luxembourg	00352		

TRIER AREA

General

Police Headquarters Trier	+49 651 97790
Doctor on call - (weekends/holidays)	+49 651 45555

Pharmacies

Adler Apotheke	Porta-Nigra-Platz 2	+49 651 25794
Süd-Apotheke	Südallee 33	+49 651 43263
Paulin-Apotheke	Paulinstr. 88	+49 651 24909
Die Apotheke Mariahof	Am Mariahof 27	+49 651 32072
Liebfrauen-Apotheke	Ehranger Str. 224	+49 651 6016
West-Apotheke	Eurener Str. 10	+49 651 88892
Hildegardis-Apotheke	Rheinstr. 3	+49 651 52012

Banks

Commerzbank	+49 651 71690
Deutsche Bank 24	+49 651 4670
Sparkasse Trier	+49 651 7120
Targobank	+49 651 975580
Volksbank Trier	+49 651 97970

Catering Services

Culinaro Catering GmbH	+49 651 47470
Pfeifer Gastronomiemanagement	+49 651 9960000

BAUMHOLDER AREA

General

Police Headquarters Baumholder +49 6783 991-0
Police Headquarters Kusel +49 6381 919-0

Banks

KSK Birkenfeld +49 6783 99430
Volksbank +49 6781 6021-0

Pharmacies

Westrich Apotheke +49 6783 99400

Catering Services

Hotel Berghof +49 6783 1011

SAARLAND AREA

General

Police Headquarters St.Wendel +49 6851 8980
Police Headquarters Türkismühle +49 6852 9090

Pharmacies

Burgapotheke, Nohfelden +49 6852 469
Hubertusapotheke, Türkismühle +49 6852 6365

ADAC RALLYE DEUTSCHLAND



Wir danken allen unseren Partnern und Sponsoren!



ADAC



Red Bull

Eibach



motorsportbutik.com

RPR1.

adrenalin
DER MOTORSPORT-VERLAG

DMSB

WRC
FIA WORLD RALLY
CHAMPIONSHIP

LVerMGeo
Landesamt für Vermessung und Geobasisinformation
Rheinland-Pfalz

FÜR DEN TÄGLICHEN ETAPPENSIEG.



RED BULL VERLEIHT FLÜÜÜGEL.



Start Sections 1, 2 (Sunrise: 6:32, Sunset: 20:40) Friday 21 August 2015 - V2

TC/ SS	LOCATION	SS dist.	Liaison dist.	Total dist.	Target time	1st car due
0	Start Trier Service Park					08:00
RZ	Refuel FIA Fuel					
1	Distance to next refuel	(31,24)	(75,17)	(106,41)		
1	Udelfangen		18,35	18,35	00:27	08:27
SS 1	Sauertal 1	14,84				08:30
2	Dackscheid		47,70	62,54	01:10	09:40
SS 2	Waxweiler 1	16,40				09:43
RZ	Remote Refuel FIA Fuel (Bickendorf - 9,12 km after finish SS 2)					
2	Distance to next refuel	(36,91)	(96,08)	(132,99)		
3	Monzel		56,72	73,12	01:19	11:02
SS 3	Moselland 1	23,24				11:05
4	Trittenheim		10,05	33,29	00:42	11:47
SS 4	Mittelmosel 1	13,67				11:50
4 A	Regroup & Technical Zone IN		38,43	52,10	01:20	13:10
4 B	Regroup OUT / Service IN				00:30	13:40
	Service A (Messepark)	(68,15)	(171,25)	(239,40)	00:30	
4 C	Service OUT					14:10
RZ	Refuel FIA Fuel					
3	Distance to next refuel	(31,24)	(75,17)	(106,41)		
5	Udelfangen		18,35	18,35	00:27	14:37
SS 5	Sauertal 2	14,84				14:40
6	Dackscheid		47,70	62,54	01:10	15:50
SS 6	Waxweiler 2	16,40				15:53
RZ	Remote Refuel FIA Fuel (Bickendorf - 9,12 km after finish SS 6)					
4	Distance to next refuel	(36,91)	(96,37)	(133,28)		
7	Monzel		56,72	73,12	01:19	17:12
SS 7	Moselland 2	23,24				17:15
8	Trittenheim		10,05	33,29	00:42	17:57
SS 8	Mittelmosel 2	13,67				18:00
8 A	Parc Fermé & Technical Zone IN		38,43	52,10	01:20	19:20
8 B	Parc Fermé OUT / Service IN				00:10	(19:30)
	Flexi Service B (Messepark)	(68,15)	(171,25)	(239,40)	00:45	
8 C	Flexi Service OUT / Overnight Parc fermé IN (Messepark Trier)					(20:15)

SECTION 1

SECTION 2

All cars must be returned to Parc Fermé no later than 23:15

FRIDAY TOTALS 136,30 342,50 478,80

Start Sections 5, 6, 7 (Sunrise: 6:35, Sunset: 20:36) Sunday 23 August 2015 - V2

TC/ SS	LOCATION	SS dist.	Liaison dist.	Total dist.	Target time	1st car due
17 D	Parc fermé OUT (Messepark Trier)					06:10
17 E	Service IN		0,29	0,29	00:02	06:12
	Service F (Messepark)	(0,00)	(0,29)	(0,29)	00:15	
17 F	Service OUT					06:27
RZ	Refuel FIA Fuel					
12	Distance to next refuel	(33,67)	(104,43)	(138,10)		
18	Fell		28,92	28,92	00:37	07:04
SS 18	Stein & Wein 1	19,59				07:07
19	Papiermühle		39,69	59,28	01:01	08:08
SS 19	Dhrontal 1	14,08				08:11
19 A	Regroup & Technical Zone IN		35,82	49,90	01:00	09:11
19 B	Regroup OUT / Service IN				00:10	09:21
	Service G (Messepark)	(33,67)	(104,43)	(138,10)	00:30	
19 C	Service OUT					09:51
RZ	Refuel FIA Fuel					
13	Distance to Parc Fermé IN	(33,67)	(105,78)	(139,45)		
20	Fell		28,92	28,92	00:37	10:28
SS 20	Stein & Wein 2	19,59				10:31
20 A	Regroup & Technical Zone Föhren IN		22,99	42,58	00:44	11:15
20 B	Regroup Föhren OUT				00:30	11:45
21	Papiermühle		18,05	18,05	00:20	12:05
SS 21	Dhrontal 2 (PowerStage)	14,08				12:08
21 A	Technical Zone IN		35,82	49,90	01:00	13:08
21 B	Service IN				00:03	13:11
	Service H (Messepark)	(33,67)	(105,78)	(139,45)	00:10	
21 C	Service OUT / Parc fermé IN (Messepark Trier)					13:21
	Podium from					15:00

SECTION 5

SECTION 6

SECTION 7

SUNDAY TOTALS	67,34	210,50	277,84
----------------------	--------------	---------------	---------------

TOTALS OF THE RALLY				
	SS	Liaison	Total	* %
Friday (Sections 1, 2) - 8 SS	136,30	342,50	478,80	28,5
Saturday (Sections 3, 4) - 9 SS	170,79	470,07	640,86	26,7
Sunday (Sections 5, 6, 7) - 4 SS	67,34	210,50	277,84	24,2
TOTAL	374,43	1023,07	1.397,50	26,8

SPECIAL STAGE ITINERARIES – COMPARISON WITH 2014 AND EARLIER (V1)

2015	2014	Description (<u>Note:</u> The distances indicated are subject to final confirmation of the recorded Road Book data)
FRIDAY 21 August 2015		
SS 1/5 Sauertal (14.84 km)	SS 1/4 Sauertal (14.14 km)	Basically run in opposite direction compared to 2014 with some variations.
SS 2/6 Waxweiler (16.40 km)	SS 2/5 Waxweiler (16.40 km)	Same as in 2014
SS 3/7 Moselland (23,24 km)	SS 3/6 Moselland (21.02 km)	Start till 4,62 km = NEW From 4,62 km (=2014 Road Book page 1-71/box 9) till finish: same as in 2014
SS 4/8 Mittelmosel (13.67 km)		Roads used before in 2011 as SS Moselwein - Start till 1.06 km = NEW - From 1.06 km (=2011 Road Book page 3-33/box 9) till 12.57 km (=2011 Road Book page 3-40/box 44) same as in 2011 - From 12.57 km till finish new
SATURDAY 22 August 2015		
SS 9/14 Grafschaft (18.35 km)	SS 16/18 Grafschaft (19.27 km)	Same as in 2014 but start 0,85 km later (=2014 Road Book page 3-32, in front of box 4)
SS 10/17 Bosenberg (17.13 km)		Roads used before in 2007: - Start till 2,56 km = NEW - From 2,56 km (=2007 Road book page 2-145/box 8) till 11,63 km same as in 2007 - from 11,63 km till 14,16 km = NEW - from 14,16 km (=2007 Road Book 2-145/box24) till finish same as in 2007
SS 11/12/15 Arena Panzerplatte (2,87 km)	SS 9/13 Arena Panzerplatte (3.03 km)	Basically same as in 2014 with following changes: - Start till 0,73 km = NEW - From 0,73 km (=2014 Road Book page 2 -52/box 30) same as in 2014 till 1,75 km same as in 2014 - From 1,75 km till Finish new
SS 13/16 Panzerplatte Long (45.61 km)	SS 11/14 Panzerplatte Lang (42.51km)	A combination of roads used in 2013, 2012 and earlier. A provisional detailed comparison is available on the following page.
SUNDAY 23 August 2015		
SS 18/20 Stein & Wein (19.59 km)	SS 7/11 Stein & Wein (17.53 km)	- From Start till km 7,44 same as in 2014 - From 7,44 km = NEW - From 8,5 km run in opposite direction compared to 2014 - From 17 km till finish = NEW

SS 19/21 Dhrontal (14.08 km)	SS 15/17 Dhrontal (18.03 km)	Basically same as in 2014 but shorter - Start till 4,19 km (=2014 Road Book page 3-17/box 10) same like 2014 - From 5,22 km (=2014 Road Book page 3-19/box 15) till 12,02 km (=2014 Road Book 3 page 3-22/box 33) same like 2014 - From 12,41 km (=2014 Road Book 3 page 3-23/box 38) same like 2014 till 13,16 km (=2014 Road Book page 3-24/box 42) - From 13,16 km till finish: NEW
------------------------------------	------------------------------------	--

SS 13/16 Panzerplatte Long – Detailed comparison:

2015	NEW / PREVIOUS
KM 0.00 – 4.31	2013 Road Book page 3-50/box 1 – page 3-50/box 5
KM 4.31 – 5,14	NEW
KM 5.14 – 6.95	2012 Road Book page 2-55/box 6 – page 2-56/box 11
KM 6.95 – 7.68	NEW
KM 7.68 – 9.94	2014 Road Book page 2-80/box 83 – page 2-82/box 88
KM 9.94 – 16.10	NEW
KM 16.10 – 23.73	2012 Road Book page 2-151/box 18 – page 2-154/box 33
KM 23.73 – 31.50	2013 Road Book page 3-142/box 22 – page 3-146/box 41
KM 31.50 – 40.58	Mix of new roads and roads used before
KM 40.58 – 45.23	2013 Road Book page 3-161/box 88 – page 3-164/box 103
KM 45.23 – 45.61	NEW till finish

RECONNAISSANCE SCHEDULE (V1 / 14.04.2015)
SUMMARY

GROUP 1 (P1 + P2 + P3)	GROUP 2 (Non Priority)
TUESDAY, 18 August 2015:	
08:00 – 11:45 hrs: SS 1/5 (Sauertal) SS 2/6 (Waxweiler)	08:00 – 12:40 hrs: SS 3/7 (Moselland) SS 4/8 (Mittelmosel)
11:30 – 16:30 hrs: SS 3/7 (Moselland) SS 4/8 (Mittelmosel)	11:00 – 15:15 hrs: SS 18/20 (Stein&Wein) SS 19/21 (Dhrontal)
14:00 – 18:20 hrs: SS 18/20 (Stein&Wein) SS 19/21 (Dhrontal)	13:30 – 21:00 hrs: SS 1/5 (Sauertal) SS 2/6 (Waxweiler)
(SERVICE PARK) <i>488,88 KM</i>	(SERVICE PARK) <i>486,26 KM</i>
WEDNESDAY, 19 August 2015:	
08:00 – 11:30 hrs: SS 9/14 (Grafschaft) SS 10/17 (Bosenberg)	08:00 – 12:15 hrs: SS 11/12/15 (Arena Panzerplatte) SS 13/16 (Panzerplatte Long)
10:45 – 15:30 hrs: SS 11/12/15 (Arena Panzerplatte) SS 13/16 (Panzerplatte Long)	11:30 – 17:00 hrs: SS 10/17 (Bosenberg) SS 9/14 (Grafschaft)
14:45 – 18:45 hrs: Shakedown Konz	15:00 – 19:15 hrs: Shakedown Konz
(END OF RECCE) <i>436,68 KM</i>	(END OF RECCE) <i>409,60 km</i>

20 - 23 August 2015



Detailed Recce Distance Calculation (V1)

(Note: "End" means last time to access special stage from SS start)

GROUP 1 - Tuesday, 18 August 2015

START	END	SPECIAL STAGES (<u>to STOP control</u>) ROAD SECTIONS	DISTANCES - KM		
		<i>From Service Park Trier</i>	(18,35)		(18,35)
08:00		SS 1/5 SAUERTAL	15,18		
		Back to start	9,14		
		SS 1/5 SAUERTAL	15,18		
		To next stage	47,36	86,86	
		SS 2/6 WAXWEILER	16,77		
		Back to the start	28,09		
	12:00	SS 2/6 WAXWEILER	16,77	61,63	148,49
		To next stage	56,35		56,35
11:30		SS 3/7 MOSELLAND	23,57		
		Back to the start	18,82		
		SS 3/7 MOSELLAND	23,57		
		To next stage	9,72	75,68	
		SS 4/8 MITTELMOSEL	13,92		
		Back to the start	10,02		
	16:30	SS 4/8 MITTELMOSEL	13,92	37,86	113,54
		To next stage	39,40		39,40
14:00		SS 18/20 STEIN&WEIN	19,86		
		Back to the start	11,75		
		SS 18/20 STEIN&WEIN	19,86		
		To next stage	39,42	90,89	
		SS 19/21 DHRONTAL	14,52		
		Back to the start	11,17		
	18:30	SS 19/21 DHRONTAL	14,52	40,21	131,10
		<i>To Service Park Trier</i>	(35,38)		(35,38)
		END OF RECCE DAY 1 - Summary			488,88

20 - 23 August 2015



GROUP 1 - Wednesday 19 August 2015

START	END	SPECIAL STAGES (to STOP control) ROAD SECTIONS	DISTANCES - KM		
		<i>From Service Park Trier</i>	(44,48)		(44,48)
08:00		SS 9/14 GRAFSCHAFT	18,57		
		Back to start	12,78		
		SS 9/14 GRAFSCHAFT	18,57		
		To next stage	60,09	110,01	
		SS 10/17 BOSENBERG	17,47		
		Back to the start	11,70		
	11:30	SS 10/17 BOSENBERG	17,47	46,64	156,65
		To next stage	45,77		45,77
10:45		SS 11/12/15 ARENA PANZERPLATTE	3,10		
		Back to the start	0,14		
		SS 11/12/15 ARENA PANZERPLATTE	3,10		
		To next stage	9,08	15,42	
		SS 13/16 PANZERPLATTE LONG	46,02		
		Back to the start	15,53		
	15:30	SS 13/16 PANZERPLATTE LONG	46,02	107,57	122,99
		To Service Park Trier	84,74		84,74
		From Service Park Trier	10,46		10,46
14:45		SHAKEDOWN KONZ	4,87		
		Back to the start	6,33		
	18:45	SHAKEDOWN KONZ	4,87	16,07	16,07
		<i>To Service Park Trier</i>	(11,43)		(11,43)
		END OF RECCE DAY 2 - Summary			436,68

Detailed Recce Distance Calculation (V1)

(Note: "End" means last time to access special stage from SS start)

GROUP 2 - Tuesday 18 August 2015

START	END	SPECIAL STAGES (to STOP control) ROAD SECTIONS	DISTANCES - KM		
		<i>From Service Park Trier</i>	(44,79)		(44,79)
08:00		SS 3/7 MOSELLAND	23,57		
		Back to start	18,82		
		SS 3/7 MOSELLAND	23,57		
		To next stage	9,72	75,68	
		SS 4/8 MITTELMOSEL	13,92		
		Back to the start	10,02		
	12:40	SS 4/8 MITTELMOSEL	13,92	37,86	113,54
		To next stage	39,40		39,40
11:00		SS 18/20 STEIN&WEIN	19,86		
		Back to the start	11,75		
		SS 18/20 STEIN&WEIN	19,86		
		To next stage	39,42	90,89	
		SS 19/21 DHRONTAL	14,52		
		Back to the start	11,17		
	15:45	SS 19/21 DHRONTAL	14,52	40,21	131,10
		To next stage	53,73		53,73
14:30		SS 1/5 SAUERTAL	15,18		
		Back to start	9,14		
		SS 1/5 SAUERTAL	15,18		
		To next stage	47,36	86,86	
		SS 2/6 WAXWEILER	16,77		
		Back to the start	28,09		
	21:00	SS 2/6 WAXWEILER	16,77	61,63	148,49
		<i>To Service Park Trier</i>	(44,30)		(44,30)
		END OF RECCE DAY 1 - Summary			486,26

GROUP 2 - Wednesday 19 August 2015

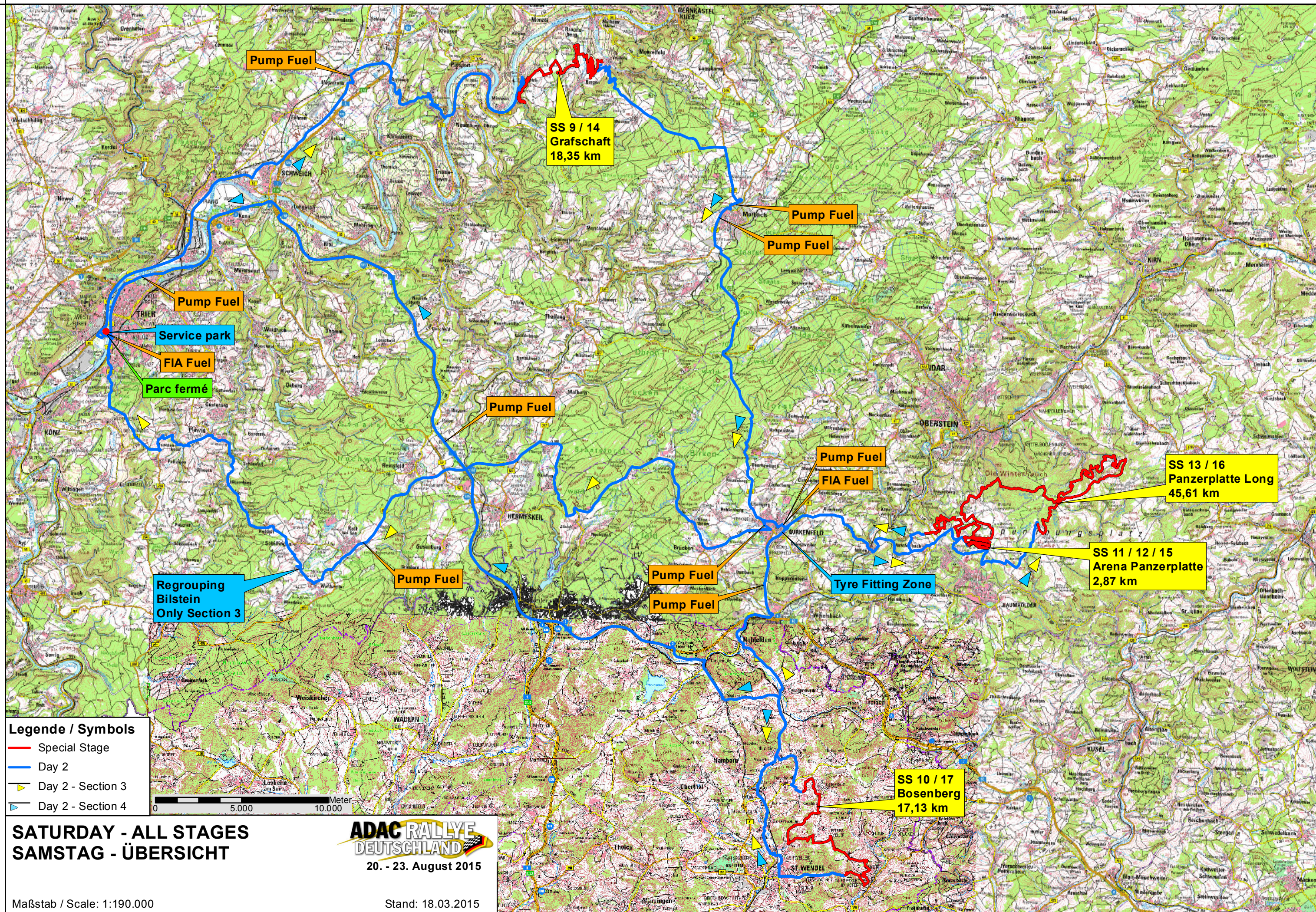
START	END	SPECIAL STAGES (to STOP control) ROAD SECTIONS	DISTANCES - KM		
		<i>From Service Park Trier</i>	<i>(94,08)</i>		<i>(94,08)</i>
08:00		SS 11/12/15 ARENA PANZERPLATTE	3,10		
		Back to the start	0,14		
		SS 11/12/15 ARENA PANZERPLATTE	3,10		
		To next stage	9,08	15,42	
		SS 13/16 PANZERPLATTE LONG	46,02		
		Back to the start	15,53		
	12:15	SS 13/16 PANZERPLATTE LONG	46,02	107,57	122,99
		To next stage	33,06		33,06
11:30		SS 10/17 BOSENBERG	17,47		
		Back to the start	11,70		
		SS 10/17 BOSENBERG	17,49		
		To next stage	82,58	129,24	
		SS 9/14 GRAFSCHAFT	18,57		
		Back to start	12,78		
	17:00	SS 9/14 GRAFSCHAFT	18,57	49,92	179,16
		To Service Park Trier	47,88		47,88
		From Service Park Trier	10,46		10,46
15:00		SHAKEDOWN KONZ	4,87		
		Back to the start	6,33		
	19:15	SHAKEDOWN KONZ	4,87	16,07	16,07
		To Service Park Trier	<i>(11,43)</i>		<i>(11,43)</i>
		END OF RECCE DAY 2 - Summary			409,60

FRIDAY - ALL STAGES FREITAG - ÜBERSICHT

Maßstab / Scale: 1:175.000

Stand: 12.03.2015





Pump Fuel

SS 9 / 14
Grafschaft
18,35 km

Pump Fuel

Pump Fuel

Pump Fuel

Service park

FIA Fuel

Parc fermé

Pump Fuel

Pump Fuel

FIA Fuel

SS 13 / 16
Panzerplatte Long
45,61 km

SS 11 / 12 / 15
Arena Panzerplatte
2,87 km

Regrouping
Bilstein
Only Section 3

Pump Fuel

Pump Fuel

Pump Fuel

Tyre Fitting Zone

SS 10 / 17
Bosenberg
17,13 km

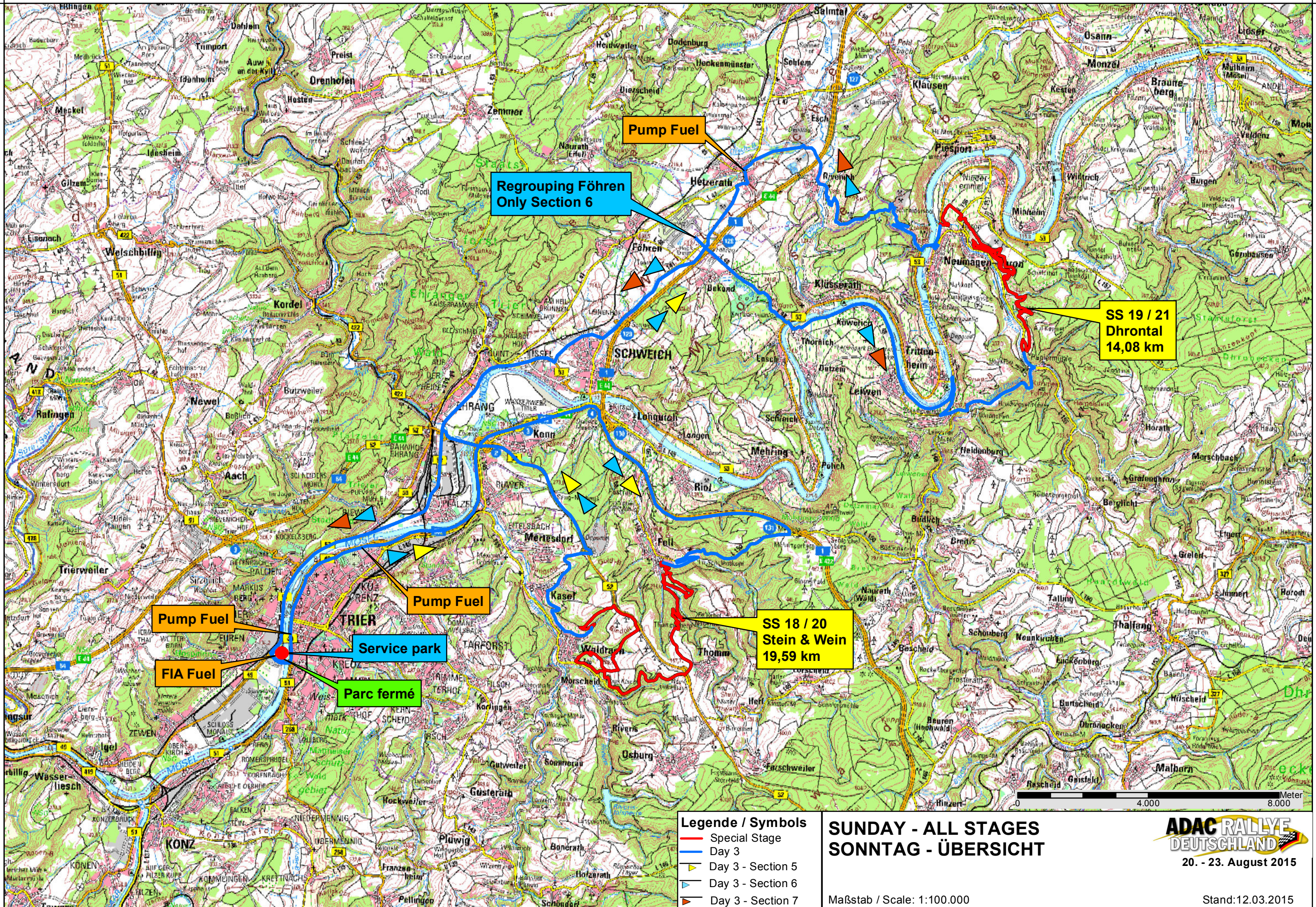
Legende / Symbols

- Special Stage
- Day 2
- ▶ Day 2 - Section 3
- ▶ Day 2 - Section 4



**SATURDAY - ALL STAGES
SAMSTAG - ÜBERSICHT**





Regrouping Föhren
Only Section 6

Pump Fuel

SS 19 / 21
Dhronthal
14,08 km

Pump Fuel

Service park

Pump Fuel

FIA Fuel

Parc fermé

SS 18 / 20
Stein & Wein
19,59 km

- Legende / Symbols**
- Special Stage
 - Day 3
 - ▶ Day 3 - Section 5
 - ▶ Day 3 - Section 6
 - ▶ Day 3 - Section 7

**SUNDAY - ALL STAGES
SONNTAG - ÜBERSICHT**

Maßstab / Scale: 1:100.000

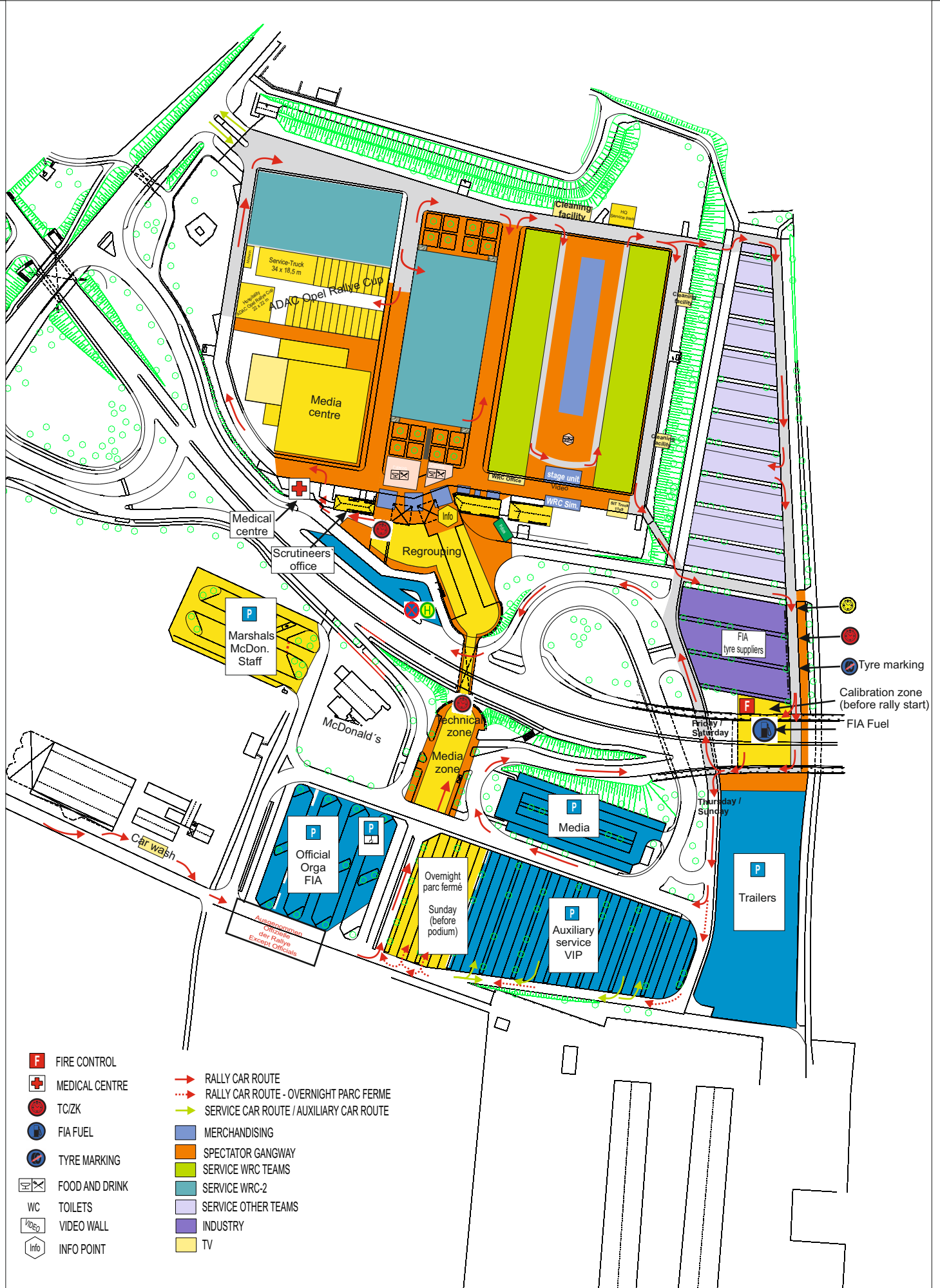


Stand: 12.03.2015

ADAC Rallye Deutschland 2015



Layout service park / Übersicht Servicepark - (V 2)



TRIER STADTPLAN / STREET PLAN



20.-23. August 2015

Stand: 15.04.2015

